



Where Dreams Meet Reality...

~ Cuddle up in the ~
Lap of Mother Nature!



where dreams meet reality...



Ashapurna

Ashapurna Group has been a leader in the Real Estate industry since almost 27 years. From changing skylines to ensuring inspiration and innovation in every project, their vision is guided by determination & hard work. In every residential to commercial project, the team has always been undeterred by obstacles & progressive in outlook.

We maintain the legacy of innovation in construction and continue to add new milestones, every year. Blending expertise with an environment-friendly approach, the Ashapurna Group reinforces cost-effective offerings, while implementing the latest technology in our projects, ensuring complete customer satisfaction.

“Experience here - Greenery with Luxury
in Equal Measure, for a Beautiful Lifestyle!”





“ The world as we have created it is a process of our thinking.
It cannot be changed without changing our thinking. ”

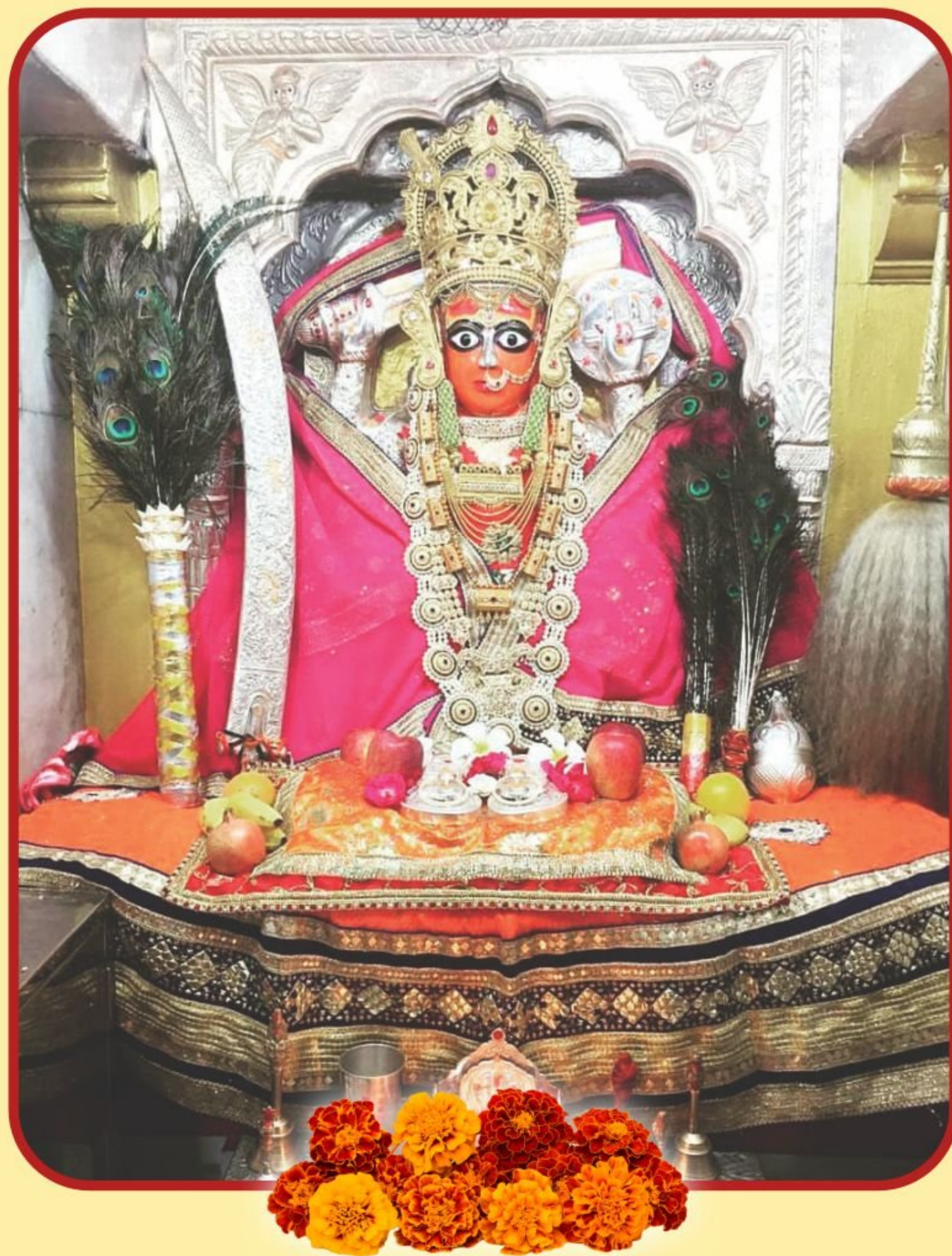
OUR VISION

To be a leader and most preferred real estate name in India by constantly striving hard to put innovation and futuristic perspective in every fine detail of designing and execution.

OUR MISSION

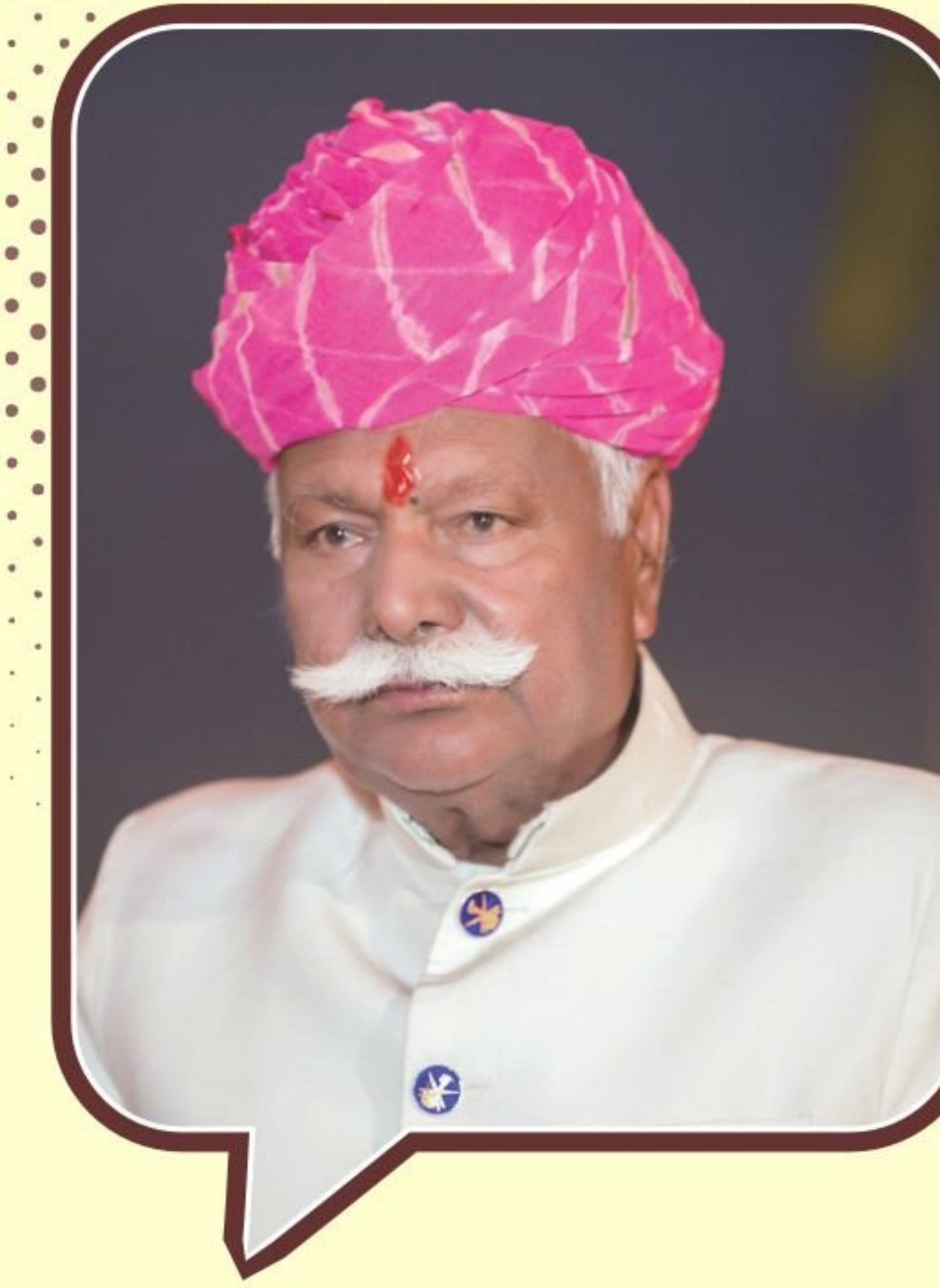
To offer quality and refined workmanship in both product and service plus maintain the highest level of professionalism while dealing with customers, employees and associates.

माँ आशापूर्णा



Maa Ashapura is the other name of the Maa Shakambri Devi. Maa Ashapura is worshipped as one of the aspect devis of the principal deity of Nadole(Pali District). The main temple of Ashapura Maa is situated at Kutch(Gujarat). She is considered to be an incarnation of Goddess Ashapura.

The inspiration behind Ashapura Buildcon Ltd is Maa Ashapura herself which also happens to be the kuldevi of company's founder Shri Khichi Chauhan Karan Singh Uchiyada Ji's clan. Shri Khichi Chauhan Karan Singh Uchiyada Ji gives the complete credit of the company's commendable success to the blessings of Maa Ashapura. Company's motto "Where Dreams Meet Reality" also describes the giving nature of Maa Ashapura. The group has delivered 36 projects so far and always made sure to build a Maa Ashapura Temple in almost all of its projects.



Inspiration Mentor

Thakur Mohan Singh
Director

Thakur Mohan Singhji Khichi is born and brought up in Uchiyada, Jodhpur and did his primary education from Chopasni School Jodhpur. He belongs to the warrior family of Late Shri Durg Dasji Khichi of Narwa. He was a kiledaar of opulent Jodhpur state and was posted at Jodhpur Fort at the time of Maharaja Shri Man Singhji. Once the Jodhpur army was away in Ahmedabad for war when the Jaipur state attacked the Jodhpur Fort. Shri Durg Dasji Khichi along with his small troop fought for the dignity of Jodhpur State for 3 consecutive days and achieved victory by sacrificing his life. To honour the supreme sacrifice of the great warrior, the Jodhpur State built a cenotaph at Mehrangarh Fort at the left side of the first pole near Ganesh statue. Thakur Mohan Singhji is the 7 generation of Shri Durg Dasji Khichi.

Besides his professional profile, Shri Thakur Mohan Singhji Khichi is known as an active social worker who is always there to help the needy in the best of his capacity. He worked as the President, Gaj Singh Vishram Bhawan for 10 years and offered his remarkable services to the community. He is an active director in Ashapura Buildcon Ltd. He with Smt Lehar Kanwar laid the foundation of Ashapura Buildcon Ltd. Today, Shri Thakur Mohan Singhji is the torchbearer of Ashapura's success journey where his able leadership and guidance always come handy in the times of need.

Shri Thakur Mohan Singhji, a firm believer of the philosophy "Do More of What Makes You Happy", always comes ahead to help everyone in the company and outside as well. His deep-rooted values derived from his father Late Shri Mag Singhji Khichi. To take the legacy of his father ahead, he runs a charitable organisation with his son Shri Karan Singhji, Chairman & Managing Director, Ashapura Buildcon Ltd., under the name of Shri Magmohan Charitable Trust. During the COVID-19 pandemic, Magmohan Charitable Trust stood in solidarity with the nation and served society with all its might. Apart from establishing a much needed oxygen plant during the lockdown, the trust served more than 75,000 food packets in Uchiyada during the tough lockdown times and donated `11,11,111 Lacs to the Chief Minister Relief Fund for the purchase of life-saving equipment. What's more, the trust also handed over its Jaipur based 4 Star Ashapura Hotel with 80 beds and Udaipur based Architectural College Buddha Group of Institutions with 200 beds as COVID-19 quarantine facilities to the government of Rajasthan. The trust has served the community during the Mehrangarh tragedy with all its resources and passion. The trust is active in organising community medical camps and many other initiatives of social upliftments.

Responding to the oxygen shortage in Rajasthan during the emergency Covid second wave, Ashapura Group led from the front and donated an oxygen plant worth 50 lakh rupees to the Rajasthan government. This initiative further paved the way for the installation of more than 18 new oxygen plants in Jodhpur which played an instrumental role in saving many lives. Besides this, Ashapura Group also joined hands with Jodhpur Builders & Developers Association and arranged 70 oxygen concentrators for the remote areas and served the needy people during the challenging Covid times. In another unique initiative, Ashapura Group also donates one unit in all its projects to a poor widow.

Leadership



Leadership Par Excellence

Karan Singh Uchiyarda
Chairman & Managing Director



We at Ashapurna Buildcon Limited very solemnly believe that a person's true personality develops by his self esteemed values of life. His earnest & sincere achievements in pursuit of his ambitions dream will usher in all round growth and prosperity. He has to be visionary with a crystal clear vision to achieve the best. His leadership qualities should encourage and nurture talents in his hard working team.

Shri Karan Singh Uchiyarda is a farsighted and keen visionary having a rich experience and technology savvy back ground and qualification. He has been the professional driving force since the inception of this group. He is also a generous philanthropist who has also worked hard for the upliftment of the poor and needy populace.

His relentless effort and his teams sincere hard-work has helped the company surpass many mile-stones and now are at a thresh-hold to be at an enviable pinnacle. In the last 27 years Ashapurna has developed & completed glorious reality projects in western Rajasthan.

These projects are now a symbol of dwelling development in Rajasthan which the state richly deserved.

Journey-1996



The Journey of Change

Ashapurna Buildcon started its journey in 1996 as a private limited company and within a year of its inception, the company took the shape of a limited company. It was 2004 when Ashapurna received the honour of being the very first ISO 9001:2000 certified company of western Rajasthan. A project of 225 plots/villas in the year of 1997 was the first offering by Ashapurna which had been completed in a record time of 18 months. Since then, delivering projects in 18 months has become a tradition and till now the group has delivered 14000 units in residential segment with the concept of Integrated Township projects and gated plotting development projects with all major amenities and facilities. In commercial segment, Ashapurna is pioneer into developing commercial Mall & Multiplex in Jodhpur and organized commercial zone in all major township projects in a well-planned manner. Ashapurna is presently working on development of 43rd project.

In a relatively short span of time, Ashapurna Buildcon Limited has grown into a global standard real estate name of Rajasthan. The company has earned a respect of delivering homes that are perfect blend of world-class comfort and defining luxury. Company's vast portfolio includes many residential and commercial landmarks that are considered to be the real estate milestones in their respective domains. Apart from the core business of real estate, group has diversified its business in hospitality, education and power sector. Group is running a college at Udaipur, Rajasthan by the name of Buddha Group of Institutions and is running star category hotels in Jodhpur and Jaipur. Group has recently started the construction work of a 5 star hotel-cum-resort project in Uchiyarda, Jodhpur. In power sector, company has developed windmills at Jaisalmer and working for solar plant of large capacity at Phalodi, Rajasthan.

Shri Karan Singh Uchiyarda, the visionary leader behind the success of Ashapurna Buildcon, is a renowned name in both real estate and hospitality sector. Prestigious "Residency Palace Hotel" is already a hospitality landmark of Jodhpur and another hotel in Jaipur by the name of The Ashapurna Hotel has earned name in better services and luxury segment. Company has now started construction of a 5 star hotel-cum-resort in Uchiyarda, Jodhpur in a heritage pattern which is going to be the address of new luxury and elegant lifestyle. In a nutshell, the journey of Ashapurna Buildcon is on with a passion to build a future which can hold immense possibilities for a promising future. It also holds an achievement of becoming the first real estate developer in western Rajasthan to deliver 224 affordable flats for possession under CMAY scheme and facilitated the real needy people with affordable segments.

Team Ashapurna

Ashapurna has a team of professionals who bring various levels of experience and expertise on the board. The diversity of the team is bonded for individual and collective excellence. The spirit of "working together, growing together" channelises energy in every part of the group's larger system. The very fabric of the Ashapurna human resource allows individuals to explore new avenues of growth.



Mr. Karan Singh Uchiyarda (Chairman & Managing Director)

Mr. Karan Singh Uchiyarda, chairman and managing director of Ashapurna Buildcon Limited is a man with versatile personality. Being active in real estate business, he has created new horizons of developing projects with innovative concepts and created new landmarks in entire Rajasthan and introduced integrated township project in Rajasthan for the first time. Ashapurna has been credited as the first high rise developer in Jodhpur by launching the Ashapurna Tower and the first ever developer of Mall and Multiplex in Western Rajasthan. Ashapurna Mall and Multiplex is now a grand success.



Mr. Harshvardhan Singh Uchiyarda (Director)

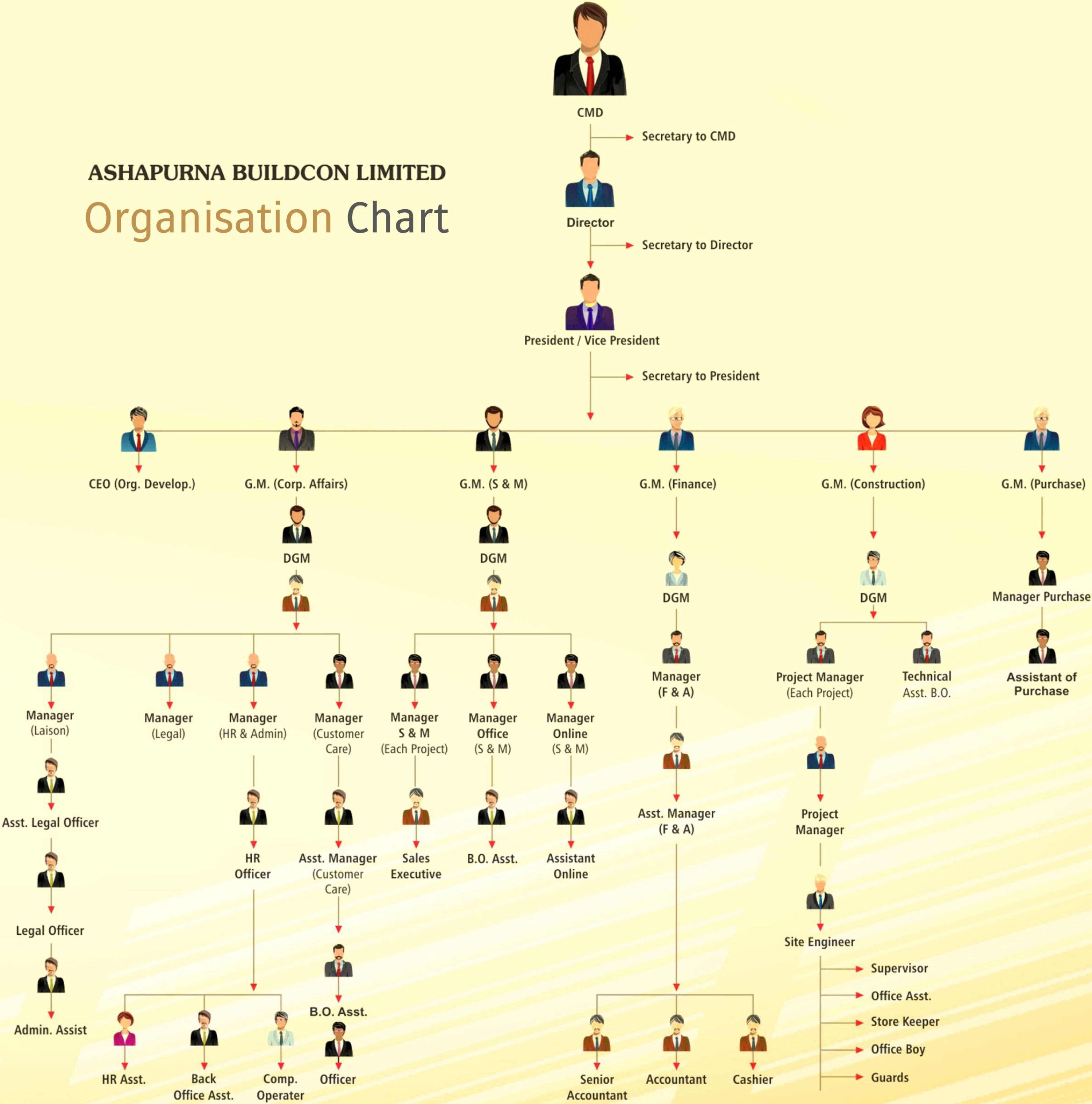
Harshvardhan Singh Uchiyarda did his schooling from Mayo College, Ajmer, B.COM Honours from Christ College, Bangalore and MSc from Oxford Brookes University (UK) with specialisation in real estate. He has proved himself as the most efficient 'think tank'. He has reformed the organization with technology as a priority. Outside the domain of his key responsibilities, Harsh relentlessly works on bringing cohesiveness and integrity across various teams of the group. He has ushered in many changes like paperless technology based work and a professional work environment. Harsh is also instrumental in the domain of strategies, business planning, sales, marketing, CRM, strong human



Developing Teams and Leaders with the characteristics that successful business requires



ASHAPURNA BUILDCON LIMITED
Organisation Chart



Socially Responsible Corporate



Flat Handing Over
By Shri Digvijay Singh Ji (Samajik Sarokar)



Promise of a Free Home to a Widow Delivered

Blanket & Food Distribution at **Ashram Apna Ghar**Blanket Distribution **By Director**

Gifting of a Bungalow to a Widow
Smt. Pratibha Devi Singh Patil (Samajik Sarokar)

Her Excellency Smt. Pratibha Devi Singh Patil, the then Governor of Rajasthan and later the Honourable President of India, was present during the gifting of a bungalow to a widow at Ashapura City on 7th Feb 2007. Commenting on the occasion she said "Everybody wants to earn money but only a few execute their social responsibility well. There are many great people but there are very few good people. 'Karan Singh, you are both good and great.' An invaluable compliment of a lifetime.



Seminar on **Housing Problem**

Ashapurna Group organised a seminar on housing problems. Various issues on the subject was discussed at great length during the event.



Seminar on **Labour Housing Solution** (Industrialist and Builders)

Ashapurna Group organised a seminar on labour housing solutions. The seminar was attended by many industrialists and builders of repute.



Widow Free Flat Scheme (Samajik Sarokar of Ashapurna)

On the auspicious occasion of Basera Bhoomi Pujan, Ashapurna Group's CSR wing Shree Mag Mohan Charitable Trust announced a free flat to a widow through the lottery system.



Awarding A Residence Under Widhwa Mahila Aavas Yojna 2019

The programme was presided over by Honourable Shri Govind Mathur, former Chief Justice, Allahabad High Court. Shri Rajendra Gehlot, Shri Badriram Jakhad (former MLA), Shrimati Manisha Panwar (MLA, Jodhpur City), Shri Shyam Singh Rajpurohit, Dr. Arvind Mathur, Shri K. R. Meghwal and Shri Bheekh Singh Bhati were also present during the occasion. Under Widhwa Mahila Aavas Yojna 2019, Majnubala won a flate through lottery system.

The Social Face of Ashapurna

Ashapurna Group is a socially responsible company. The group is active in almost all spheres of society and works on the ground level to bring about a meaningful change. Ashapurna has worked in the fields of health, education, social awareness and environment. During the challenging time of Covid, the group has worked hand in hand with government and non government agencies. Ashapurna understands its responsibility and always strives hard to be with the society in the time of need.

आशापूर्णा ग्रुप ने आइसोलेशन वार्ड के लिए समर्पित की उदयपुर की बुद्धा कॉलेज



आशापूर्णा बिल्डकॉन ग्रुप की ओर से उदयपुर की बुद्धा ग्रुप ऑफ कॉलेज इंस्टीट्यूट में 200 बेड के आइसोलेशन वार्ड के लिए राज्य सरकार को समर्पित की। ग्रुप के चेयरमैन करणसिंह

मरीजों के लिए कॉलेज उपलब्ध उपलब्ध करा दी गई है। उदयपुर में संचालित हॉस्पिटल के अलावा यह कॉलेज नया आइसोलेशन सेंटर बनने जा रहा है। जयपुर स्थित 4 सितारा आशापूर्णा

उचियारड़ा ने 11 लाख रुपए और जयपुर में 40 रुम का होटल सौंपा, मालाणी ने 11 लाख का चेक दिया



■ आशापूर्णा बिल्डकॉन ग्रुप ने 11 लाख 11 रुम का होटल सौंपा, मालाणी ने 11 लाख का चेक दिया



आशापूर्णा बिल्डकॉन ग्रुप एवं मगमोहन चैरिटेबल ट्रस्ट के सहयोग व बापिणी तहसीलदार उस्मान खान की अपील पर करीब 3 हजार लोगों की राशन सामग्री ब्लॉक कांग्रेस कमेटी के उपाध्यक्ष बाबूसिंह को सौंपी। प्रदेश कांग्रेस कमेटी के सचिव करणसिंह उचियारड़ा ने बताया कि हमारा यही प्रयास है कि कोई भी व्यक्ति भूखा ना रहे।

उचियारड़ा ने प्रमुख सचिव को पत्र लिखकर ऑक्सीजन संयंत्र

उपकरण व मेडिकल किट पर लगने वाले जीएसटी को माफ करने की मांग स्टार्ट

कहा- जीएसटी माफ होने से अतिरिक्त उपकरण मुहैया हो पाएंगे

नवज्योति/जोधपुर। आशापूर्णा ग्रुप के देवजीकल सेंटर जोधपुर के योगेन्द्र सिंह केवरमैन करणसिंह उचियारड़ा ने कोरोना काल में भाग्यशाली द्वारा भेंट किए जा रहे ऑक्सीजन संयंत्र उपकरणों व मेडिकल किट पर लगने वाले जीएसटी को माफ करवाने की मांग उठा रखी है। जिसके चलते अब

सचिव, केंद्रीय मंत्री गजेन्द्रसिंह शेखावत व राज्यसभा सांसद राजेन्द्र महतो को भी पत्र लिख मांग कर चुके हैं। उचियारड़ा ने प्रमुख सचिव को लिखे पत्र में बताया कि कोरोना महामारी में दानदाताओं की ओर से अस्पताल में ऑक्सीजन जनरेशन प्लांट व ऑक्सीजन कंसेंट्रेटर मशीन कोरोना संक्रमित मरीजों के इलाज के लिए दान कर रहे हैं। भाग्यशाली व दानदाताओं की ओर से ऑक्सीजन सिलेंडर

जा रहे हैं। जिस पर जीएसटी लग रहा बताया कि अगर व की लागत का ऑ प्लॉट दान करता है ऑक्सीजन जनरेशन से रहित मिल में उचियारड़ा ने प्र से वार्ता की। वहीं प्र



आशापूर्णा बिल्डकॉन ग्रुप एवं मगमोहन चैरिटेबल ट्रस्ट के सहयोग व बापिणी तहसीलदार उस्मान खान की अपील पर करीब 3 हजार लोगों की राशन सामग्री ब्लॉक कांग्रेस कमेटी के उपाध्यक्ष बाबूसिंह को सौंपी। प्रदेश कांग्रेस कमेटी के सचिव करणसिंह उचियारड़ा ने बताया कि हमारा यही प्रयास है कि कोई भी व्यक्ति भूखा ना रहे।

जोधपुर डवलपर एंड बिल्डर एसोसिएशन ने 25 ऑक्सीजन कंसेंट्रेटर जोधपुर को कराए उपलब्ध : उचियारड़ा

जोधपुर/नवज्योति। जिला प्रशासन एवं जेडीए कमिशनर के



जोधपुर डवलपर एंड बिल्डर एसोसिएशन की ओर से 25 ऑक्सीजन कंसेंट्रेटर का आदेश जा चुका है। इसी त्त आज जयपुर ई को 5.60 लाख

जोधपुर डवलपर एंड बिल्डर एसोसिएशन की ओर से 25 ऑक्सीजन कंसेंट्रेटर का आदेश जा चुका है। इसी त्त आज जयपुर ई को 5.60 लाख

जोधपुर डवलपर एंड बिल्डर एसोसिएशन की ओर से 25 ऑक्सीजन कंसेंट्रेटर का आदेश जा चुका है। इसी त्त आज जयपुर ई को 5.60 लाख

जोधपुर डवलपर एंड बिल्डर एसोसिएशन की ओर से 25 ऑक्सीजन कंसेंट्रेटर का आदेश जा चुका है। इसी त्त आज जयपुर ई को 5.60 लाख

आशापूर्णा ने विधवा महिला को निःशुल्क आवास की सौगात दी



नवज्योति/जोधपुर। आशापूर्णा बिल्डकॉन लि. के कोर्पोरेट कार्यालय में बुधवार को मगमोहन चैरिटेबल ट्रस्ट एवं आशापूर्णा कम्पनी द्वारा विधवा महिला को निःशुल्क आवास योजना पर अंतिम-निर्णय किया गया। योजना के अन्तर्गत लगभग 150 जरूरतमंद एवं गरीब विधवा महिलाओं ने आवेदन किया। जिसमें से स्कूटी कमेटी के सदस्य जस्टिस जे.के. व्यास, डॉ अरविन्द माथुर, के.आर. मेघवाल और विधायक श्रीमति मनीषा पंवार ने 48 योग्य जरूरतमंद एवं गरीबतम विधवा महिलाओं को प्रार्थमिकता के तहत लक्ष्मी डॉ के लिए चयन किया। जिसमें से लॉटरी के द्वारा एक महिला मनुबाला को निःशुल्क आवास दिया गया। इसके साथ ही अन्य विधवाओं महिलाओं को भी

नर सेवा ही नारायण सेवा-उचियारड़ा

आशापूर्णा कम्पनी के चैयरमैन एण्ड मैनेजिंग डायरेक्टर करणसिंह उचियारड़ा ने बताया कि सैनाचार्य अर्चलानन्द गिरी महाराज, राष्ट्रीय विधायक महेन्द्रसिंह विश्नोई, के.आर. मेघवाल, हनुमानसिंह राजपुरोहित (ब्लॉक अध्यक्ष लूणी) एवं गोपाराम प्रधान के

उचियारड़ा के प्रयास लाएंगं

जोधपुर डवलपर एंड बिल्डर एसोसिएशन ने 21 ऑक्सीजन कंसेंट्रेटर प्रशासन को सौंपे

अब ग्रामीण क्षेत्रों में ऑक्सीजन संकट दूर होगा

नवज्योति/जोधपुर। जोधपुर जिला प्रशासन एवं जेडीए कमिशनर के

जोधपुर डवलपर एंड बिल्डर एसोसिएशन की ओर से 21 ऑक्सीजन कंसेंट्रेटर का आदेश जा चुका है। इसी त्त आज जयपुर ई को 5.60 लाख

जोधपुर डवलपर एंड बिल्डर एसोसिएशन की ओर से 21 ऑक्सीजन कंसेंट्रेटर का आदेश जा चुका है। इसी त्त आज जयपुर ई को 5.60 लाख

जोधपुर डवलपर एंड बिल्डर एसोसिएशन की ओर से 21 ऑक्सीजन कंसेंट्रेटर का आदेश जा चुका है। इसी त्त आज जयपुर ई को 5.60 लाख

जोधपुर डवलपर एंड बिल्डर एसोसिएशन की ओर से 21 ऑक्सीजन कंसेंट्रेटर का आदेश जा चुका है। इसी त्त आज जयपुर ई को 5.60 लाख

जोधपुर डवलपर एंड बिल्डर एसोसिएशन की ओर से 21 ऑक्सीजन कंसेंट्रेटर का आदेश जा चुका है। इसी त्त आज जयपुर ई को 5.60 लाख

जोधपुर डवलपर एंड बिल्डर एसोसिएशन की ओर से 21 ऑक्सीजन कंसेंट्रेटर का आदेश जा चुका है। इसी त्त आज जयपुर ई को 5.60 लाख

Supporting The Battle Against Corona

While the world was battling COVID-19 pandemic issue, Ashapurna Buildcon stood in solidarity with the nation.

During the COVID-19 pandemic, Magmohan Charitable Trust stood in solidarity with the nation and served society with all its might. Apart from establishing a much needed oxygen plant during the lockdown, the trust served more than 75,000 food packets in Uchiyarda during the tough lockdown times and donated '11,11,111 to the Chief Minister Relief Fund. Special quarantine facilities were arranged at 4 star Ashapurna Hotel with 80 beds and 200 beds at Architectural collage Buddha Group, Udaipur during covid - 19 epidemic.



Our Group has also distributed 800-1000 food packets on daily basis to all the needy people of Jodhpur and adjoining areas. Chairman and Managing Director Shri Karan Singh Uchiyarda has himself led the initiatives with his team and worked with sincere efforts to provide immediate relief to the people. Also provided ration packets to all nearby villages and suburb areas of Jodhpur District.



Team installed an 80 Cylinder Oxygen plant of 560 kg per day capacity



During the second Covid wave, Jodhpur faced a huge oxygen shortage. Sensing the urgency of the moment, District Magistrate Jodhpur appealed to Jodhpur people to come forward and help the administration to the best of their capacity. Ashapurna came forward and joined hands with Magmohan Charitable Trust & Team installed an 80 cylinder oxygen plant of 560 kg per day capacity with a cost of 50 lacs.

Life at Ashapurna

Life at Ashapurna is a composite picture of various shades of professional and personal moments. There are celebrations, sharing, caring and there is humanity in its purest form. Everyday life builds new realities of a bright and happening future here.

Bhumi Pujan

for the Ashapurna NRI clubhouse was performed by Director Harshvardhan Singh Uchiyada, initiating the beginning of the clubhouse construction.



Karwa Chauth

was celebrated with great enthusiasm at Ashapurna Heritage. The event highlighted the rich traditions and community spirit of our residents.



Bhumi Pujan

for Ashapurna Mohanbagh, the 43rd project, was performed by Director Harshvardhan Singh Uchiyada, marking the start of this new Spanish-themed township.



Kanya Pujan

Ashapurna Aangan hosted a Kanya Pujan, honoring young girls and reflecting the community's cultural values.



Navratri at Ashapurna Heritage

began with a Puja, followed by energetic Garba and Dandiya performances, embodying the festival's lively spirit.



Janmashtami at Ashapurna Heritage

was celebrated with vibrant Dahi Handi and festivities, capturing the spirit of Lord Krishna's arrival.



Mohanbagh brokers meet

brought together real estate professionals to review project developments and explore new business prospects.

OUTLOOK BUSINESS SPOTLIGHT presents Project of the Year (Ashapurna NRI)



Awarding Best Reality Brands 2024



Celebrating Impact Businesses of Rajasthan (Ashapurna Buildcon Ltd.)



Snapshots of Ashapurna 27th Anniversary Celebrations



Ashapurna celebrated its 27th anniversary with a grand event at the Head Office. The occasion was marked by a ceremonial cake cutting, where the team gathered to commemorate the milestone and reflect on the company's journey of success and growth.

Director Harshvardhan Singh Uchiyada addressed the gathering with an inspiring speech, highlighting key achievements and future aspirations. His words resonated with the team, reinforcing the commitment to continued excellence and innovation as Ashapurna looks forward to the future.



Trust, Commitment & Success since 1996



Cherishing Memorable Events at Ashapura



The Touchstones of Perfection



27+ YEARS OF RICH & VARIED EXPERIENCE



49+ PROJECTS



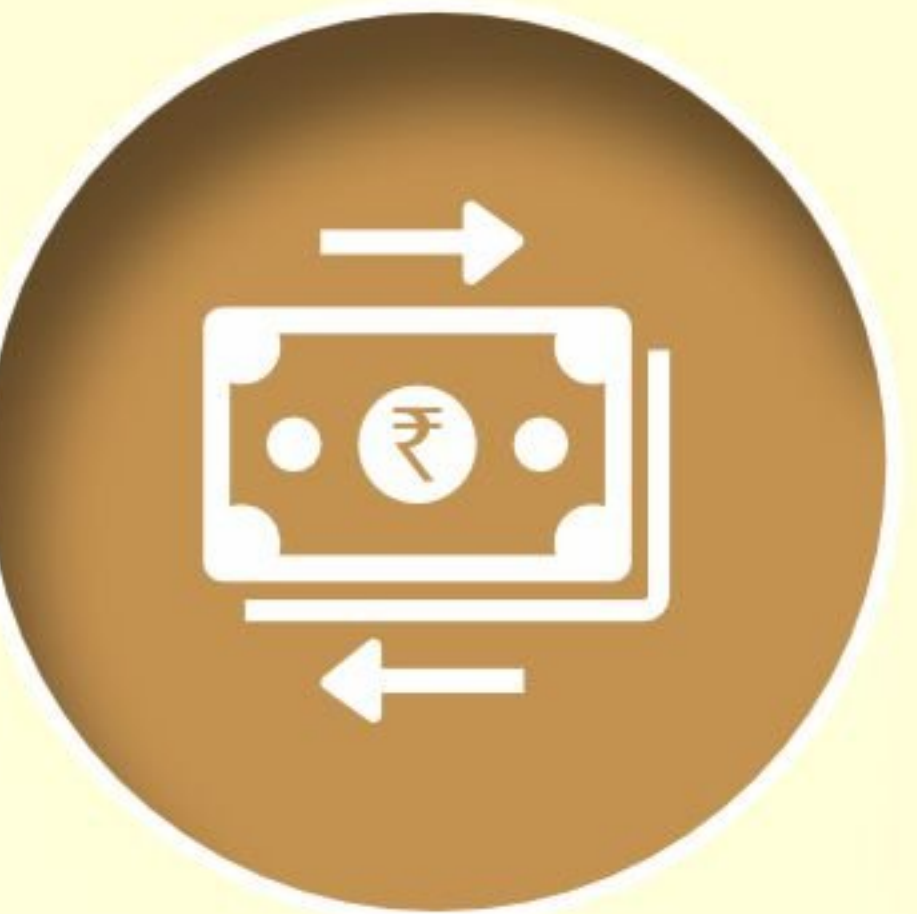
COMMENDABLE 18 MONTH DELIVERY TRACK RECORD



MORE THAN 27500 HAPPY FAMILIES



1.15 CR. SQ. FT. AREA DEVELOPED



100% TRANSPARENT TRANSACTIONS

Investment In Ashapurna Projects

Growth in Ashapurna projects has touched a new high by fetching investors a return of up to 100 times. Even in the times of economic and political turmoil, Ashapurna projects have proven their mettle by delivering the best value on every rupee spent. All Ashapurna projects are RERA registered and approved by appropriate competent authorities. The group offers transparent deals in finance facilities from all leading banks with active pre and post-sales assistance. In the real estate investment domain, Ashapurna is considered to be a landmark.

100x

Invest and Achieve
Upto 100 Times Returns With Ashapurna

Investors Club

Ashapurna Investors Club is a one-stop-shop for research-based tailor-made investment decisions. For a sound real estate investment in Jodhpur, Ashapurna investment experts help investors in selecting the right choice in their interest segment. The group has a deep knowledge of the market trends and offers a vast project portfolio offering a wide range of investment options. The group also welcomes joint ventures and collaborations in land development and real estate and infrastructure projects.

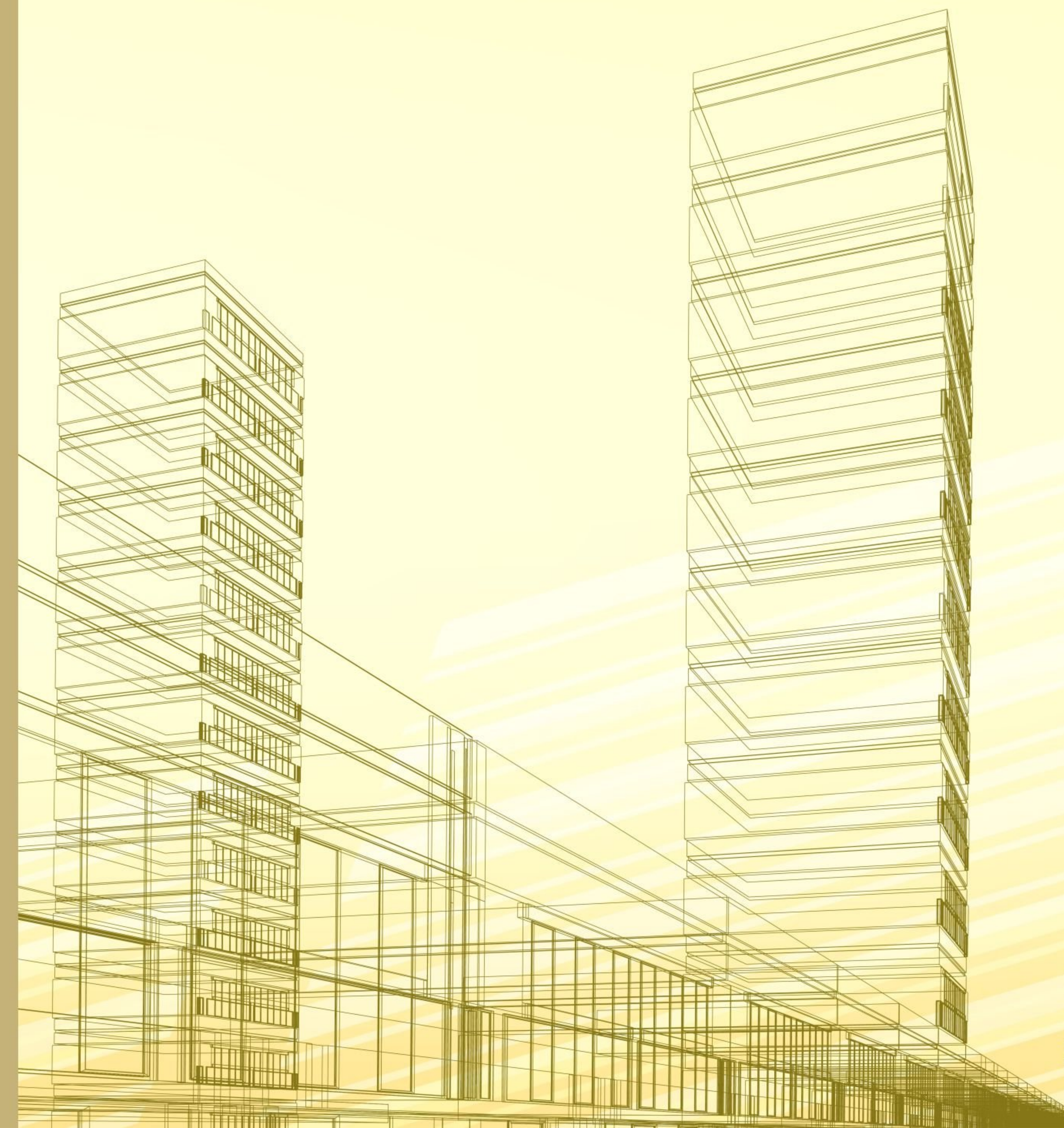


Residential

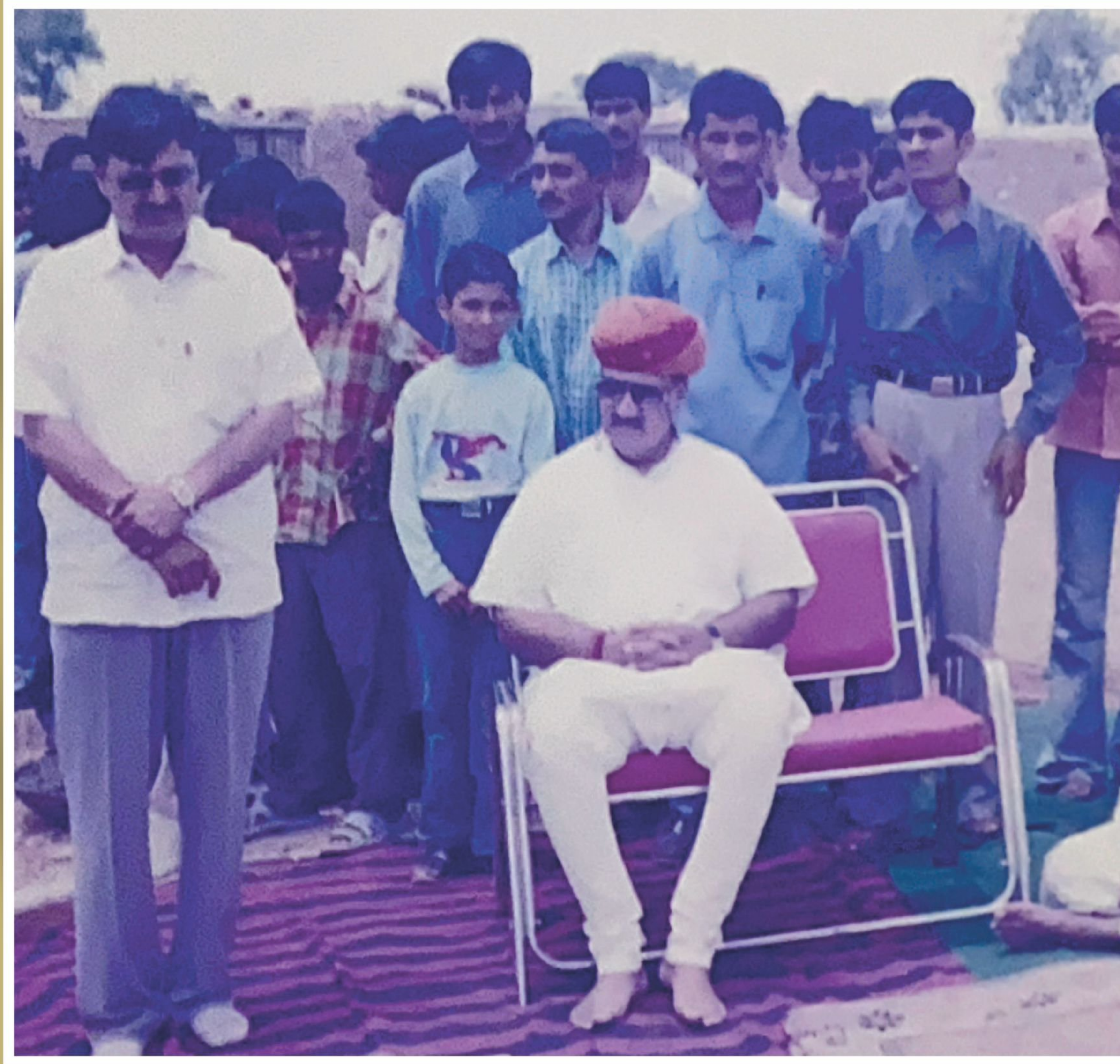


Achiever's milestones

residential



Residential Project



ASHAPURNA TOWNSHIP Uchiyada

Near Sikargarh, Jodhpur

Ashapurna's first integrated township project at Jodhpur, opposite Vidhyashram School. It was launched in 1997 with independent villas and row houses, It was handed over by Shree Maharaja Gaj Singh Ji-I & was completely sold out.



- Project Status : Sold Out • Project Area : 32 Acres • No. of Units : 50 Villas, 351 Plots
- Amenities : Integrated Township Project With Landscaped Gardens, Fountain, Temple Etc

Residential Project



ASHAPURNA TOWNSHIP Jalore

Ashapura Jalore was a dream project off Ashapura Buildcon and also the pride of all townships In Rajasthan. The township was successfully completed in 2001 in a record time of 8 months. The handing over of the bungalows was done by Shri Ashok Gehlot, the then chief minister of Rajasthan. All 225 bungalows of the project have been sold out.



- Project Status : Sold Out • Project Area : 14 Acres • No. of Units : 225 Villas
- Amenities : Integrated Township Project with All Amenities and Facilities

Residential Project



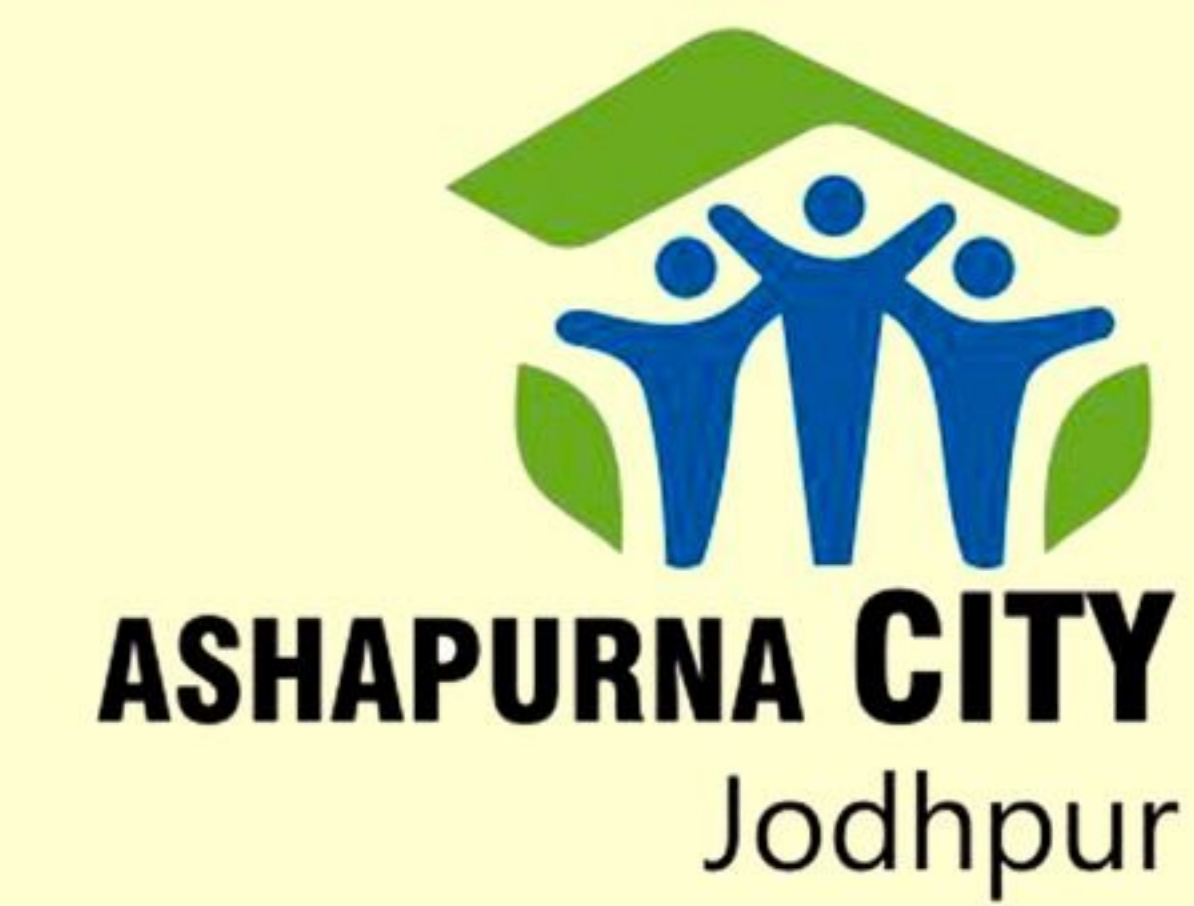
Hadecha Road, Sanchore

Ashapura Township Sanchore is a self-contained township with 125 villas & 125 plots in the campus. With all its amenities and features, the project has been completed in a record time of 18 months. It was sanctioned and awarded to the proprietors by Pujay Shri 1008 Shri Shantinath Ji Maharaj and Member of Parliament from Jodhpur Shri Jaswant Singh Vishnoi.



- Project Status : Sold Out • Project Area : 16 Acres • No. of Units : 125 villas & 125 plots
- Amenities : Integrated Township Project with All Amenities and Facilities

Residential Project



**Boranada Road,
Near DPS Circle, Jodhpur**

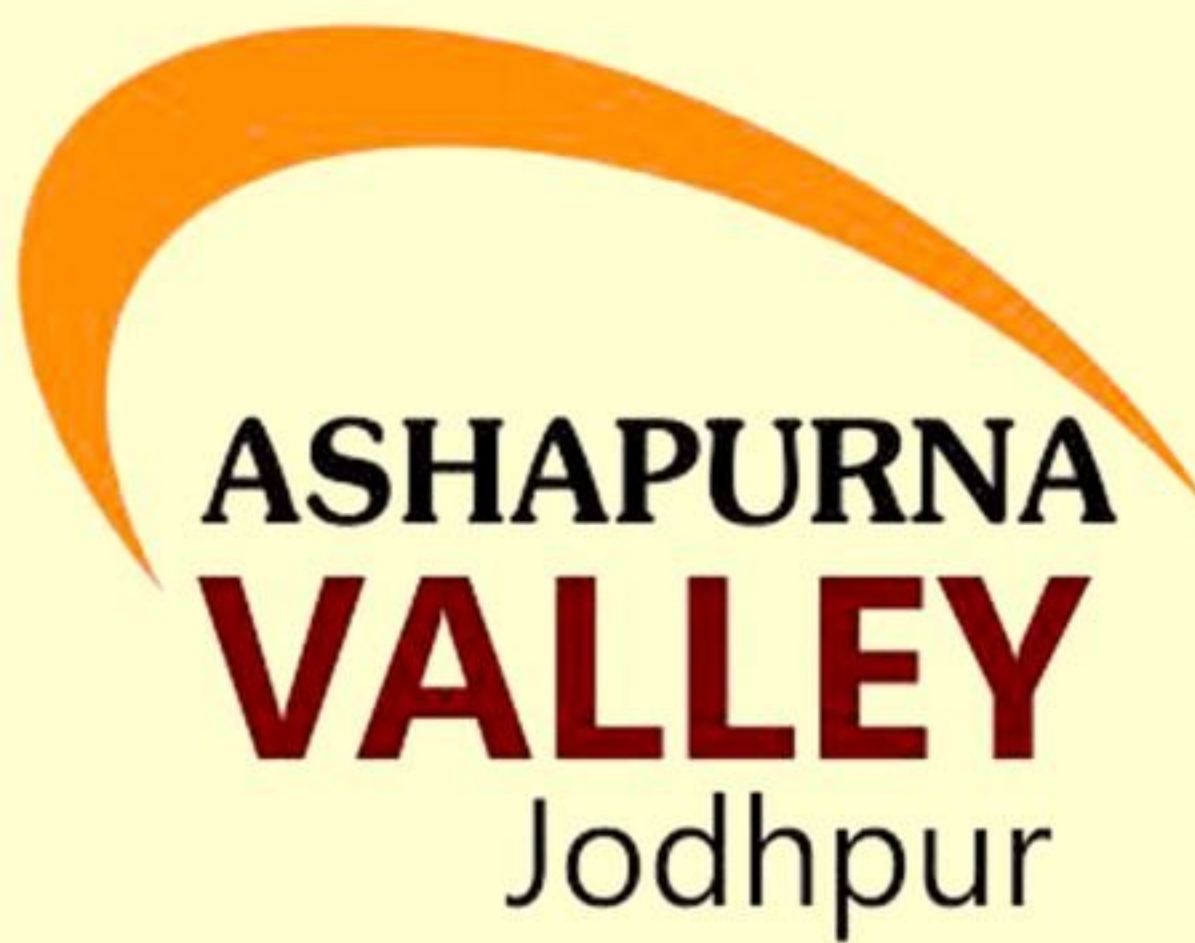
Ashapura City is the largest planned township of western Rajasthan. The township was inaugurated by Her Excellency Smt. Pratibha Devi Singh Patil, the then Governor of Rajasthan and later the Honorable President of India. Ashapura City has 4 phases consisting of around 350 villas and 700 plots in the sizes of Kunj 45 ft X 70 ft & 45 ft X 60 ft, Sadan 30 ft X 60 ft, Niwas & Aawas 25 ft X 50 ft and 3 storied Nano flats.

The township has 60 ft X 40 ft wide road and amenities like clubhouse, swimming pool, gym, shopping complex, Maa Ashapura Temple, community hall and large playgrounds. In phase one 300 families are already residing in the township for almost 5 years now. Phase two, three & four are completed recently and are being handed over to the respective owners in phased manner. Ashapura City houses solar lighting system which further adds to the energy saving aspect and also ensures uninterrupted power supply.



- Project Status : Sold Out • Project Area : 64 Acres • No. of Units : 350 villas & 700 plots
- Amenities : Integrated Township Project with All Amenities and Facilities.

Residential Project



New High Court Road, Jodhpur.

Ashapurna Valley is spread across 120 acres having around 1075 plots and 225 villas. The project is situated 200 feet wide road on Ring Road connecting Jodhpur-Jaisalmer Road & NH Pali Road, just near Jhalamand Circle. The new Rajasthan High Court is just adjacent to the project site and places like India Bulls Mall, Vivek Vihar, Vijay Rajya Sindhiya Nagar are also in close proximity. The township has 4 villa types that include Kunj 45 ft X 70 ft & 45 ft X 60 ft, Sadan 30 ft X 60 ft, Niwas & Aawas 25 ft X 50 ft and 3 storied Nano flats. The fully-integrated Ashapurna Valley Township hosts shopping complex, Maa Ashapurna temple, nicely developed gardens, roads, circles and also has provisions for school, hospital, clubhouse and Jain temple. 300 happy families are already residing in the township complex.



- Project Status : Sold Out
- Project Area : 120 Acres
- No. of Units : 1075 villas & 225 plots
- Amenities : Integrated Township Project with All Facilities and Amenities

Residential Project



Near St. Paul School, Jodhpur Road, Pali

Ashapura Township Pali is the first ever township of Pali which is 70 kms from Jodhpur on Jodhpur-Ahmedabad Highway having 400 plots and 180 villas. There are 4 residential options including model houses P Kunj, Sadan, Niwas, Aawas with 2 & 3 BHK formats. Project's main amenities include landscaped garden, security wall, main gate and broad roads with walk path. The township has been handed over in just 18 months as per schedule.



- Project Status : Few Units Available • Project Area : 36 Acres • No. of Units : 180 villas & 400 plots
- Amenities : Integrated Township Project with All Amenities and Facilities

Residential Project



Shirohi Road, Sheoganj

Ashapura Township is one-of-its-kind in Sheoganj which offers all modern amenities within its campus having 370 plots and 40 villas. There are 4 residential options including model houses Kunj, Sadan, Niwas, Aawas with 2 & 3 BHK formats. Project's main amenities include landscaped garden, security wall, main gate and broad roads with walk path. It is the first ever township of Sheoganj district that is just 70 kms from Pali. Construction of the project is in full swing and expected to be delivered within the stipulated deadline.



- Project Status : Few Units Available • Project Area : 24 Acres • No. of Units : 370 Plots & 40 Villas
- Amenities : Integrated Township Project with All Amenities and Facilities

Residential Project



ASHAPURNA
ENCLAVE
JODHPUR

पाल बाईपास, डी पी एस के नजदीक जोधपुर

Pal Bypass Road, Jodhpur

Ashapura Enclave is a township with positive aura in the midst of pristine nature. The project is a fine example of meticulous design powered by engineering perfection. Ashapura Enclave is spread across 61 acres consisting of 240 beautiful villas and 339 plots of 6 different sizes that includes Royal Ashiana 80 ft X 110 ft, Ashiana 60 ft X 90 ft, Kunj 45 ft X 70 ft & 45 ft X 60 ft, Sadan 30 ft X 60 ft & 30 ft X 50 ft. Each bungalow is elegantly planned based on the scientific vastu principles. Life here is based on international standards and boasts all essential gadgets for a safe and secure living experience. The project welcomes with its decorative entrance and landscaped surroundings and also has a main gate, wide & well-lit roads with plantation along the sides. Other facilities in the project include landscaped gardens, children play area, exclusive swimming pool with natural surroundings, clubhouse, health club with steam & massage room, table tennis hall, gymnasium, water cascades, library, meditation and Maa Ashapura temple.



- Project Status : Few Units Available • Project Area : 61 Acres • No. of Units : 240 Plots & 339 Villas
- Amenities : Integrated Township Project with All Amenities and Facilities

Residential Project



Paota A Road, Jodhpur

Ashapurna Tower is western Rajasthan's first tallest residential building having amenities like swimming pool, gymnasium, community hall, basement parking and grand entrance lobby. The project hosts 50 luxurious flats which are handed over to the respective customers.



- Project Status : Sold Out • Project Area : 0.25 Acres • No. of Units : 50 Luxurious Flats
- Amenities : Clubhouse, Gym, Swimming Pool, Table Tennis, Electricity, Water, Sewerage Connections, Landscaped Gardens, Temple, Shopping Complex, Security Etc

Residential Project



Poata B Road, Jodhpur

It was plotting project with 55 plots. Completely sold out with premium gentry as buyers. It is located at the center of city and having access to all major roads of Jodhpur city.



- Project Status : Sold Out • Project Area : 11 Acres • No. of Units : 200 Plots
- Amenities : Gated Plotting Development with Basic Infrastructure Facilities.

Residential Project



Chopasni Road, Jodhpur

Another plotting development of Ashapurna Buildcon with all necessary developments. It was a plotting for 150 plots. Completely sold out.



- Project Status : **Sold Out** • Project Area : **09 Acres** • No. of Units : **150 Plots**
- Amenities : **Gated Plotting Development with Basic Infrastructure Facilities.**

Residential Project



Boranada Road, Near DPS Circle, Jodhpur

It was an extension of City project. It is a project of 247 Plots and 48 Villas.
It is now completely sold and has 100% occupancy.



- Project Status : Sold Out • Project Area : 26.4 Acres • No. of Units : 247 Plots & 48 Villas
- Amenities : Gated Plotting Development with Basic Infrastructure Facilities.

Residential Project



Boranada Road, Near DPS Circle, Jodhpur

It was an extension of City project. It is a project of 94 Plots and 83 Villas. It is now completely sold and has 100% occupancy.



- Project Status : Sold Out • Project Area : 26.4 Acres • No. of Units : 247 Plots & 48 Villas
- Amenities : Gated Plotting Development with Basic Infrastructure Facilities.

Residential Project



Boranada Road, Near DPS Circle, Jodhpur

City-IV, onther new phase in Ashapura City was completed with 149 plots the project is completely sold out.



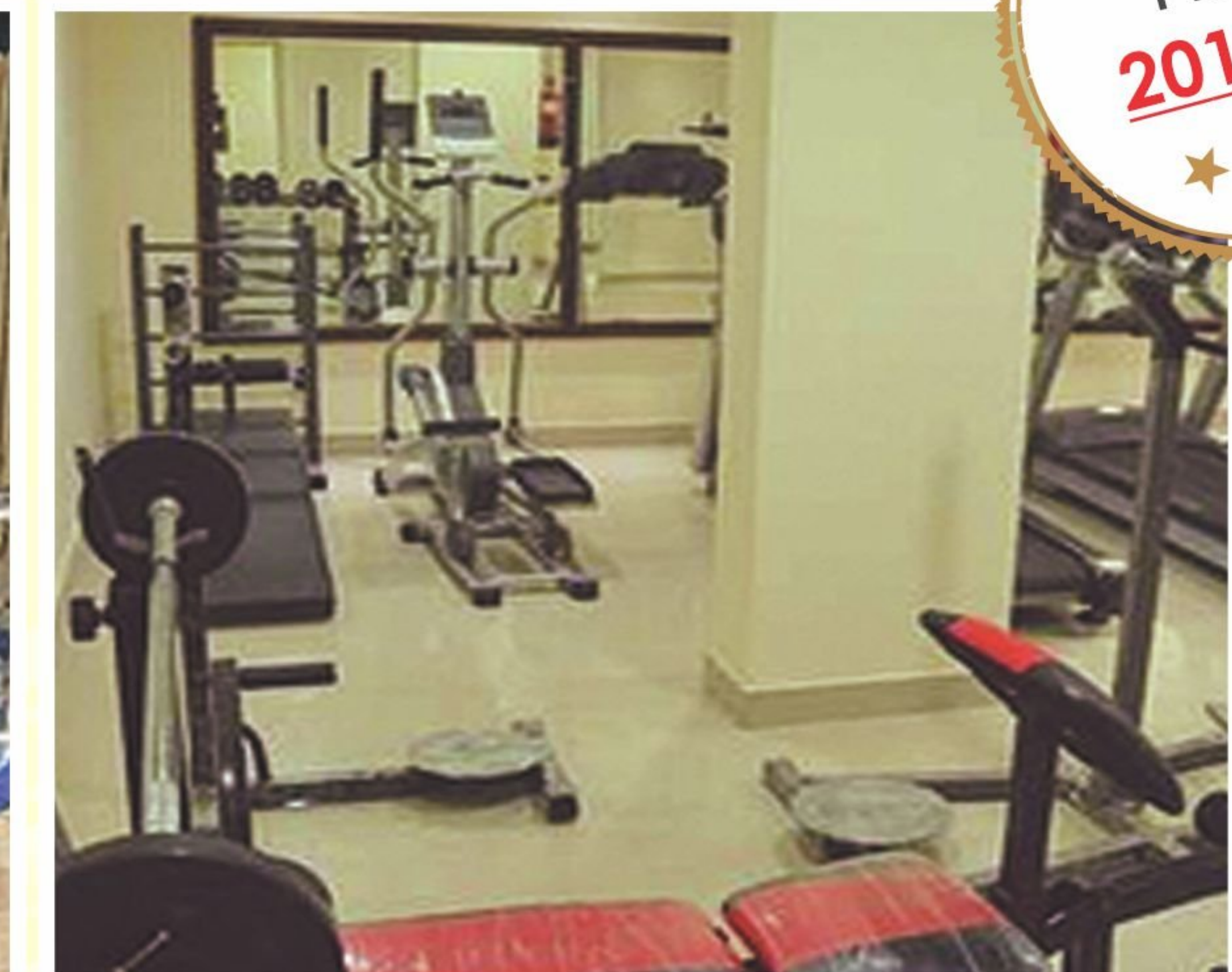
- Project Status : Few Units Available • Project Area : 29.20 Acres • No. of Units : 149Plots
- Amenities : Integrated Township Project with All Facilities and Amenities.

Residential Project



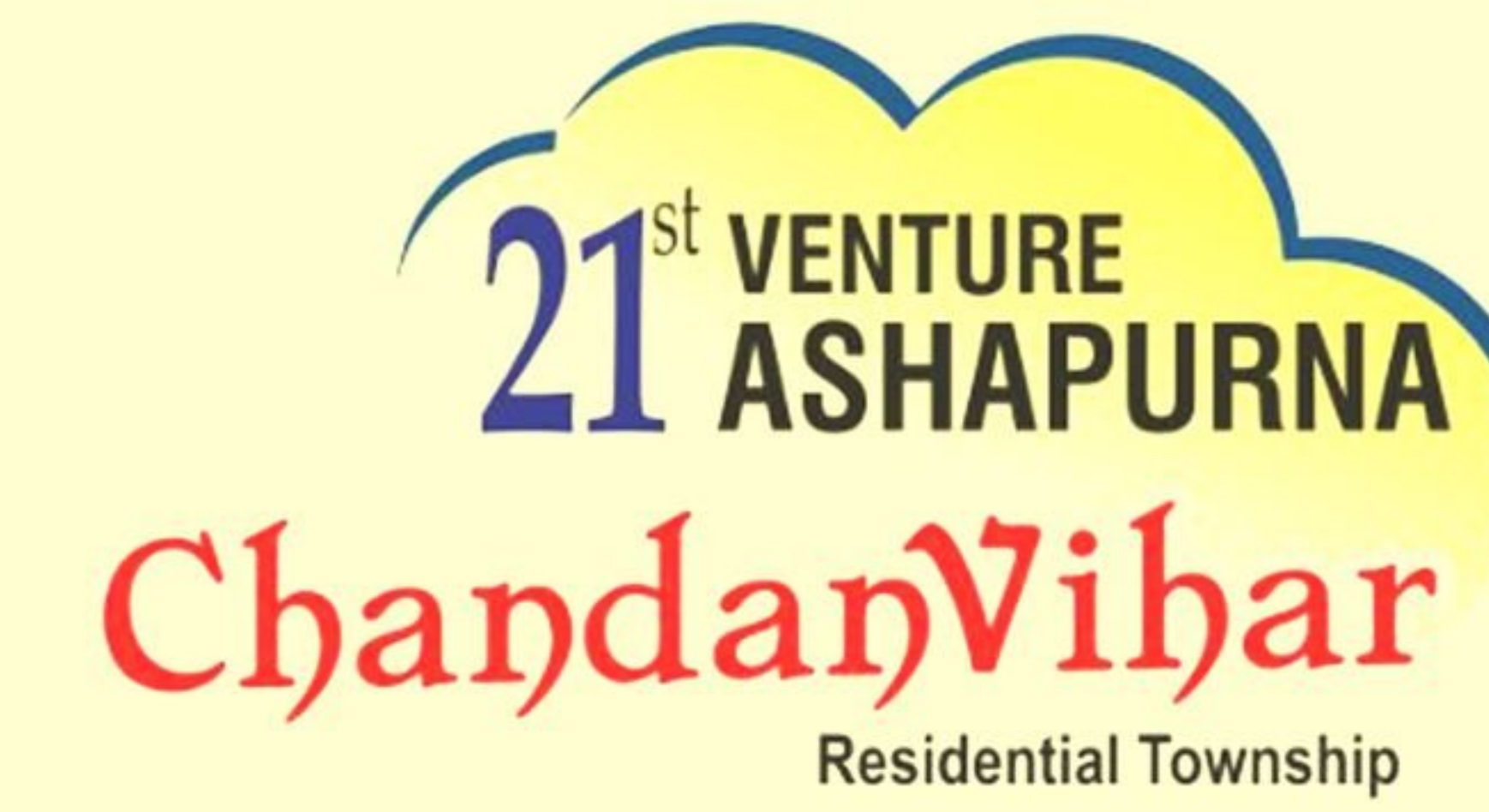
Vaishali Nagar, Jaipur

Empire is Ashapurna Group's first project in Jaipur which is situated in the prime location of Vaishali Nagar near Amrapali Circle. Empire offers 96 luxurious flats with options of 2 & 3 BHK and equipped with global facilities like swimming pool, badminton court, gymnasium and state-of-the-art security systems. Among other amenities, the project boasts attractions like beautiful landscaped gardens, children play area, and natural surroundings. Rain water harvesting, health club with steam & massage room, table tennis room, gymnasium, servant quarters, designer entrance lobby, water cascades, covered car parking, library, four side open plot area, 100% power backup for common areas & lifts and meditation hall all maintained by professional property management consultants. The size of the flats and penthouses are 1250 sq ft and 2900 sq ft respectively.



- Project Status : Few Units Available • Project Area : 02 Acres • No. of Units : 96 Luxuries Flats
- Amenities : Multistory Project with All Amenities and Facilities Including Swimming Pool and Club House Area

Residential Project



Jagh Road, Bagru, Jaipur

Ashapura has launched plotting development in Bagru, Jaipur. Comprising 1105 plotting development with adequate infrastructure development.



- Project Status : Few Units Available • Project Area : 75 Acres • No. of Units : 1105 Plots & Farm Houses
- Amenities : Gated Plotting Development with Basic Infrastructure Facilities.

Residential Project



Near Circuit House, Jaisalmer Road, Barmer

Ashapura Crown Plaza is group's debut project in Barmer, the oil city of Rajasthan, located on NH 15 near circuit house. The Crown Plaza complex houses aesthetically designed flats, shops and showrooms equipped with all ultra-modern amenities. The complex consists of lower basement, G+7 floors and basement. Crown Plaza offers 46 flats with options of 2, 3 & 4 BHK formats, 70 showrooms/shops and 31 kiosks of various sizes. It is Barmer's first well-planned residential-cum-commercial complex with a right perspective for a life of comfort.



- Project Status : Few Units Available • Project Area : 2.5 Acres • No. of Units : 46 Premium Flats, 100 Shops & Showrooms
- Amenities : Multistory Project with All Amenities and Facilities Including Two Floors of Commercial Floor.

Residential Project



ASHAPURNA
Golden
VALLEY
 Jodhpur

Near New High Court, Jhalamand, Jodhpur

Ashapura Golden Valley is a G+2 floor villas & plotting township which is an extension of popular Ashapura Valley. More than 300 satisfied families are already residing in the township happily. The project targets people with low to moderate income who are looking for a perfect home or an investment opportunity in Jodhpur. Golden Valley is located adjacent to new high court thus offers a futuristic prime address for everyone.



- Project Status : Few Units Available • Project Area : 2.5 Acres • No. of Units : 46 Premium Flats, 100 Shops & Showrooms
- Amenities : Multistory Project with All Amenities and Facilities Including Two Floors of Commercial Floor.

Residential Project



Shikargarh, Jodhpur

Ashapura Nanomax is one of the most connected townships of Jodhpur. The project is just 7 kms from railway station and adjacent to the army cantonment area. Nanomax is the first project developed on the theme of "A Modern House at an Affordable Price". The township is spread across 90 bighas consisting of 101 villas and 421 plots of various sizes i.e. Kunj 40 ft X 60 ft, Sadan 30 ft X 60 ft, Niwas 25 ft X 50 ft, Nano Awas 20 ft X 45 ft and Nano Flats 25 ft X 50 ft and 20 ft X 45 ft. All bungalows at Nanomax are luxurious and has choicest modern amenities. There is 60 ft X 40 ft road and essential amenities like garden, shopping complex, Maa Ashapura Temple and large play grounds.



- Project Status : Few Units Available • Project Area : 36 Acres • No. of Units : 421 Plots and 101 Villas
- Amenities : Integrated Township Project with All Facilities, Commercial and Temple Etc

Residential Project



Shikargarh, Jodhpur

After the successful handover of Ashapura Nanomax I, company has launched Nanomax II with 105 Plots and 12 Villas Project as an extension. It has gained very good attraction and popularity due to the success of Nanomax I.



- Project Status : Few Units Available • Project Area : 8.5 Acres • No. of Units : 105 Plots and 12 Villas
- Amenities : Integrated Township Project with All Facilities, Commercial and Temple Etc

Residential Project



Kharda Randhir, Jodhpur

Ashapurna Paradise is an affordable category project which offers options of 32 villas, 243 plots and flats. The project is situated in Kharda Randhir Jodhpur.



- Project Status : Few Units Available • Project Area : 24 Acres • No. of Units : 243 Plots and 32 Villas
- Amenities : Integrated Township Project with All Facilities.

Residential Project



Pal Bypass Road, Jodhpur

Ashapura Platinum is located on Jhalamand road opposite DPS school Jodhpur. The project consists of 60 impeccable luxurious flats having a class of their own. With a location like Pal Bypass Road, Ahapura Platinum offers an easy access to all important points of the city. All apartments are designed with sophistication without compromising on simplicity. Defining luxury at its best.



- Project Status : Few Units Available • Project Area : 0.75 Acres • No. of Units : 60 Premium Flats
- Amenities : Multistory Project with All Amenities And Facilities.

Residential Project



Shikargarh, Jodhpur

Another project in the series of Nanamax phase, company has launched the extension by the name of Nano Grand with 28 Row Houses and 316 plots. It is another successfully developed project by Ashapura.



- Project Status : Few Units Available • Project Area : 13 Acres • No. of Units : 316 Plots and 28 Villas
- Amenities : Integrated Township Project with All Facilities.

Residential Project



Basni Benda, Near Airport, Jodhpur

Ashapurna Heritage is township project spread across approximately 150 bighas with 820 plots & 62 villas and located at Basni Benda near the airport. The project is a fusion of contemporary and traditional architecture which offers a world-class living experience. Every fine detail has been taken into consideration in the design of the project. Ashapurna Heritage is a collage of captivating beauty, stylish lifestyle and ultra modern comfort that perfectly suits the taste of contemporary lifestyle projectseekers.



- Project Status : Ongoing Project • Project Area : 60 Acres • No. of Units : 820 Plots and 62 Villas
- Amenities : Integrated Township Project with All Major Amenities. Separate Club House with Banquet Hall and Party Lawns.

Residential Project



**Ashapurna
NANO
AVENUE**
Villas, Plots & Apartments

Sikargarh, Jodhpur

Ashapurna Nano Avenue, Shikargarh is a moderate budget home project which offers options of 82 villas, 125 plots and G+2 flats. Nano Avenue is an extension of Ashapurna Nano Max located at Shikargarh-Jodhpur and is just 5 km from Ratanada and 4 km from the airport. The project features 5 large & spacious landscape parks, temple, commercial shops, hi-tech security systems, side walks and many other such facilities. Nano Avenue is designed to make its dwellers feel the true essence of luxury where location, connectivity, convenience and grandeur compliment both life and lifestyle.



- Project Status : Few Units Available • Project Area : 8 Acres • No. of Units : 125 Plots and 82 Villas
- Amenities : Integrated Township Project with All Facilities.

Residential Project



Premium Budget Homes, Pal Sangariya, Jodhpur

Ashapurna Basera is company's 32md project which is first RERA approved project of west Rajasthan. The project aims at addressing the ever increasing problems of rapid urban migration. Basera also plans to handle the urban congestion problem by dealing with it in an organised manner. Basera is the first affordable project under Chief Minister Jan Aawas Yojna 2015 and also the first RERA approved project in whole of Marwar. It has 448 flats of EWS and LIG segments. Basera is located on Pal Sangariya Road surrounded by well-developed townships in the close proximity of top notch schools, Basni Industrial Area and the Boranada Area.



- Project Status : Few Units Available • Project Area : 3.2 Acres • No. of Units : 448 Flats
- Amenities : Multistory Apartment project under CMAY Scheme with premium finish and clubhouse etc.

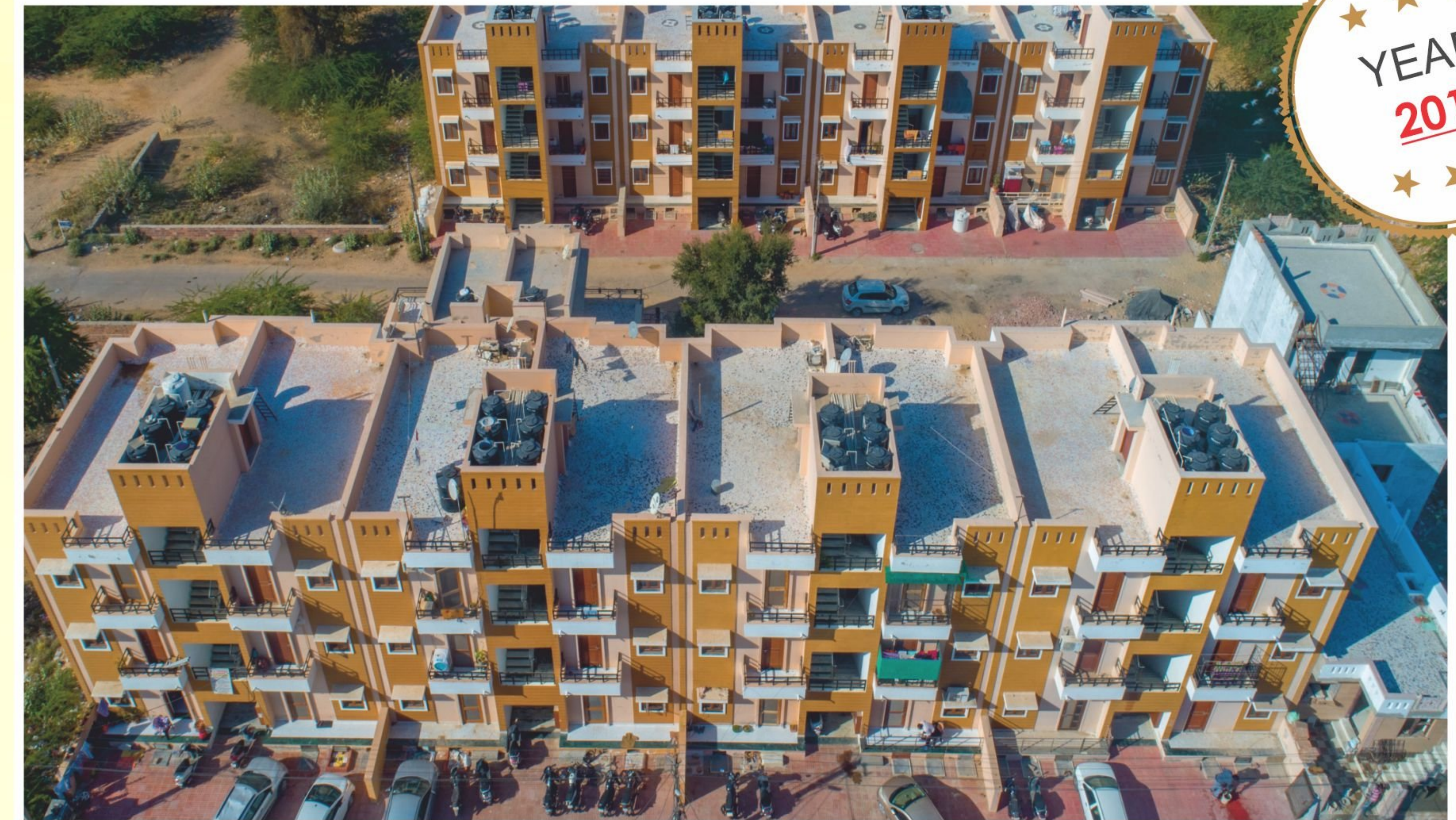
Residential Project



Ashapurna
nano
Plaza

Shikargarh, Jodhpur

Ashapurna Nano Plaza is a self contained world-class community residencies located at Shikargarh, Jodhpur comprised of 20 bighas having 163 plots and 12 villas. against the backdrop of Shikargarh Mini Market, ITC Hotel and top education institutes of Jodhpur.



- Project Status : Few Units Available • Project Area : 3.2 Acres • No. of Units : 448 Flats
- Amenities : Multistory Apartment project under CMAY Scheme with premium finish and clubhouse etc.

Residential Project



Premium Budget Villas Jhalamand, Jodhpur

Anmol is a attractive & elegant project in Ashapura's premium budget home category. it's loacated right next to new High Court, Rajasthan. Phase-I of the project has already created positive waves in the market and the Phase-II ready with lucrative offer. Based on the concept of "your land, your roof", Anmol is located adjacent togroup's another popular project Ashapura Valley at Jhalamand Jodhpur. Ashapura Anmol is a completely developed township equipped with all modern amenities. It has two phases, first phase is almost sold out and the second phase construction is in full swing.



- Project Status : Ongoing • Project Area : 6.8 Acres • No. of Units : 215 Villas
- Amenities : Integrated Township Project with Premium Budget Homes series of Ashapura having all basic amenities and facilities.

Residential Project



Premium Budget Villas Nandri-Banar Road, Banar, Jodhpur

Ashapurna Aangan is a part of popular Ashapurna Valley which is located at Nandri, Banar Road, Jodhpur. Aangan offers options in villas which are excellent examples of premium budget homes. The project boasts the right mix of facilities and amenities and gives the best value for money in its segment.



- Project Status : Ongoing • Project Area : 7.6 Acres • No. of Units : 220 Villas
- Amenities : Integrated Township Project with Premium Budget Homes series of Ashapurna having all basic amenities and facilities.

Residential Project



Pal By Pass Road, Jodhpur

After the completion of Ashapura Enclave Phase I, Ashapura Group brings Enclave Phase II which has only 21 plots which will be allotted on 'first come, first serve' basis. The internal development work like wide roads with paver blocks, water supply line, boundary wall, wireless colony and garden etc have already been completed in the project. Wide roads with dividers inside Ashapura Enclave Phase II gives a feel of a well-planned big township. Features like commercial complex, developed clubhouse, swings for kids, 24X7 high-tech security and professional housekeeping services keep Ashapura Enclave ahead not only in Rajasthan but also in the global scenario.



- Project Status : Ongoing • Project Area : 7.6 Acres • No. of Units : 220 Villas
- Amenities : Integrated Township Project with Premium Budget Homes series of Ashapura having all basic amenities and facilities.

Residential Project



Pal Bye Pass Road, Jodhpur

Ashapura Pachpadra is a thoughtfully designed township offering plots, villas, and flats. With a secure, gated community, the township ensures peace of mind for its residents. It features a dedicated kids' play area, a serene temple and a community hall. Ashapura Pachpadra is your destination for modern living with essential amenities, ensuring a comfortable and fulfilling lifestyle for every family.



- Project Status : Ongoing • Project Area : 10 Acres • No. of Units : 237 Plots, Villas & Flats
- Amenities : Integrated Township Project with Premium Budget Homes series of Ashapura having all basic amenities and facilities.

Residential Project



Near New High Court, Jhalamand, Jodhpur

Ashapurna Anmol Phase 3, situated in the heart of Jodhpur, is an extension of the successful Phase 1 and 2, which received an excellent response. With enhanced amenities, this phase continues the legacy of quality and convenience.



- Project Status : **Ongoing** • Project Area : **3.7 Acres** • No. of Units : **84 Villas**
- Amenities : **Integrated Township Project with Premium Budget Homes series of Ashapurna having all basic amenities and facilities.**

Residential Project



Pali Road, Bhakrasni, Jodhpur

Ashapurna NRI is a RERA-approved European-themed township in Jodhpur, offering both plots and villas within a secure and well-equipped living environment. The project features 10 European-themed gardens, a 3-tier security system, wide CC and paver roads, and a 30,000 sq. ft. 5-star clubhouse with comprehensive amenities. Conveniently located 2 km from JIET College and within 5 km of Indiabulls Mega Mall and D Mart, Ashapurna NRI combines thoughtful infrastructure with strategic accessibility.



- Project Status : Ongoing • Project Area : 185.7 Acre • No. of Units : 686
- Amenities : Integrated township project featuring European-themed homes, offering luxurious amenities and facilities, including a clubhouse.

Residential Project



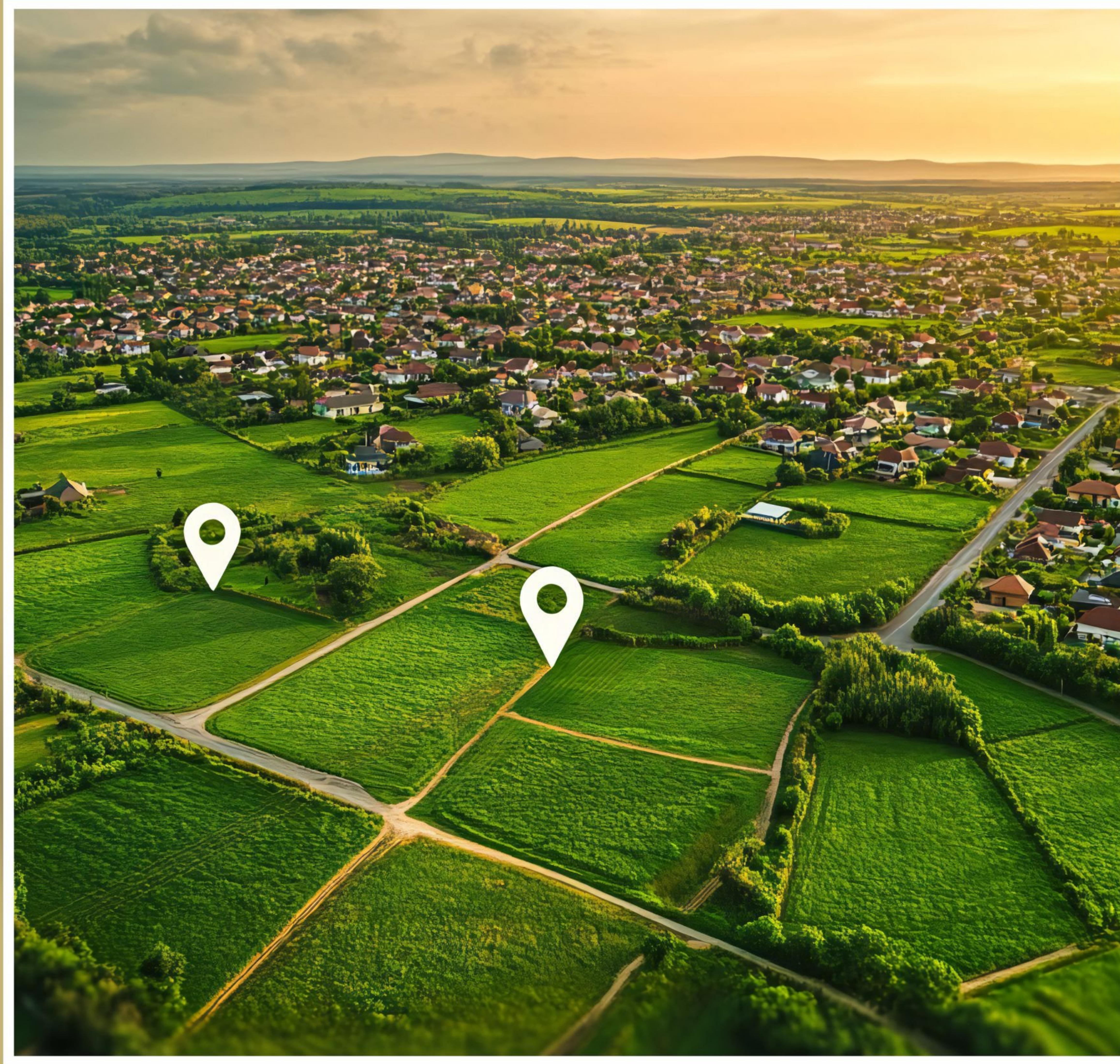
Pali Road, Bhakrasni, Jodhpur

Ashapurna NRI Phase 2, a continuation of the highly successful Phase 1, is a RERA-approved European-themed township in Jodhpur offers plots and villas.



- Project Status : Ongoing • Project Area : 185.7 Acre • No. of Units : 686 villas
- Amenities : Integrated township project featuring European-themed homes, offering luxurious amenities and facilities, including a clubhouse.

Residential Project



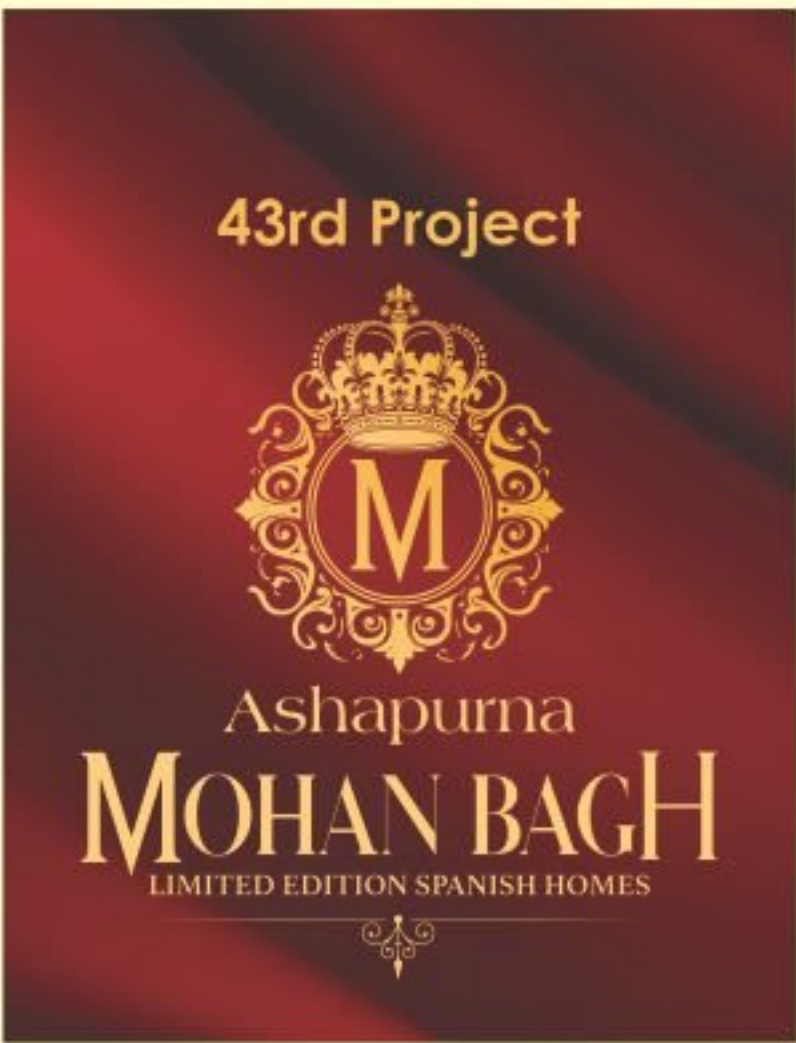
Near New High Court , Jodhpur

Ashapurna Valley Orchard, located in a prime area, offers a range of plot sizes. With AIIMS and DPS School within easy reach, and the new Rajasthan High Court adjacent to the project, it provides connectivity.



- Project Status : Ongoing • Project Area : 8 Acres • No. of Units : 113 Plots
- Amenities : Integrated Township Project with Premium Budget Homes series of Ashapurna having all basic amenities and facilities.

Residential Project



Near Welcome ITC Hotel, Uchiyarda, Jodhpur

Ashapurna Mohanbagh is a RERA-approved Spanish-themed township offering plots and villas, equipped with a 3-tier security system, a 15,000 sq. ft. 5-star clubhouse, CC paver roads, and dividers with integrated amenities, including EV charging stations. The township features over 5 theme-based gardens and a plantation of more than 2 lakh trees and plants, creating a lush, green environment. Ashapurna Mohanbagh is designed with modern infrastructure and a wide range of amenities.



- Project Status : Ongoing • Project Area : 86.66 Acres • No. of Units : 565
- Amenities : Integrated township project featuring Spanish-themed homes, offering luxurious amenities and facilities, including a clubhouse & gardens.

Commercial



Achiever's milestones

commercials



Commercial Project



ASHAPURNA Mall and Multiplex

Commercial Complex - Shastri Nagar, Jodhpur

Ashapurna Mall & Multiplex is the first & the pulsating mall of Jodhpur City. It has given new definition to the lifestyle of the residents of Jodhpur and the city has experienced a new era of shopping and entertainment with the comfort of hygienic air-conditioned environment. Located in the heart of the city, amidst the market place near Shastri Nagar GPO & Lions Club, it is in vicinity of major residential & commercial area which makes it an ideal location for shopping & entertainment. It has a retail mix of multiplex, mini anchor store, vanity stores and food-court with specified entertainment zone.



- Project Status : 100% Leased Out • Project Area : 1.5 Acres • No. of Units : 1,50,000 Sq Ft Built Up Area
- Amenities : Mall and Multiplex Project with 100% Occupancy and only Running mall of Jodhpur

Commercial Project



ASHAPURNA Commercial

Commercial Complex - Tripoliya, Jodhpur

Ashapurna Commercial is a commercial project located at Tripoliya Jodhpur. The project had commenced in 2008 and completed in 2009. The project offers 20,000 square feet of leased space. Ashapurna Commercial is 100% leased out.



- Project Status : 100% Leased Out • Project Area : 0.625 Acres • No. of Units : 20,000 Sq Ft Built Up Area
- Amenities : Commercial Complex at Tripoliya Market, Leased Out.

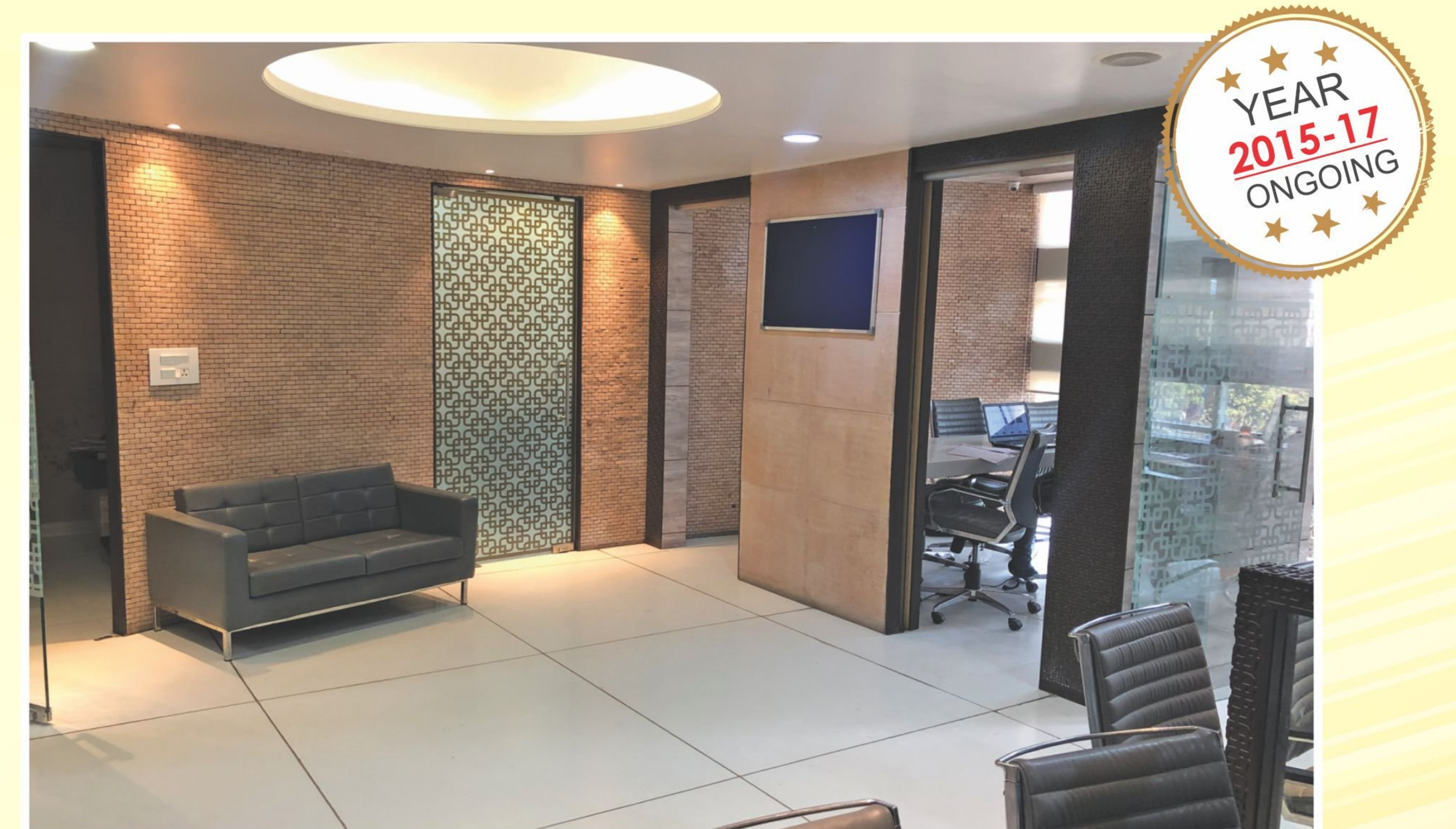
Commercial Project



ASHAPURNA Corporate

Commercial Complex
Opp. Lic Office, Circuit House Road,
Ratanada, Jodhpur

Ashapurna Commercial is a commercial project located at Tripoliya Jodhpur. The project had commenced in 2008 and completed in 2009. The project offers 20,000 square feet of leased space. Ashapurna Commercial is 100% leased out.



- Project Status : Corporate Office of Ashapurna Buildcon Ltd.
- Project Area : 0.4 Acres
- No. of Units : 9600 Sq Ft Built Up Area
- Amenities : Centralized AC Commercial Building at Ratanada, Jodhpur

Hospital



enviable warm milestones

hospitality



Hospitality Project



Hotel Residency Palace Jodhpur

3 Star Hotel, Ratanada, Jodhpur

It was the first investment of Ashapurna in real estate. Ashapurna ventured into hospitality sector by buying the first hotel project in Jodhpur and was renovated with the latest fine architecture and interiors for soothing ambience. Number of rooms increased. It is now the best accommodated with bar and rooftop restaurant facility.



- Project Status : 24 Premium Rooms with 3 Star Comfort • Project Area : 0.5 Acres
- No. of Units : 35000 Sq. Ft. Builtup Area
- Amenities : Restaurant, Roof-top Bar, Open Garden Space and Conference Hall

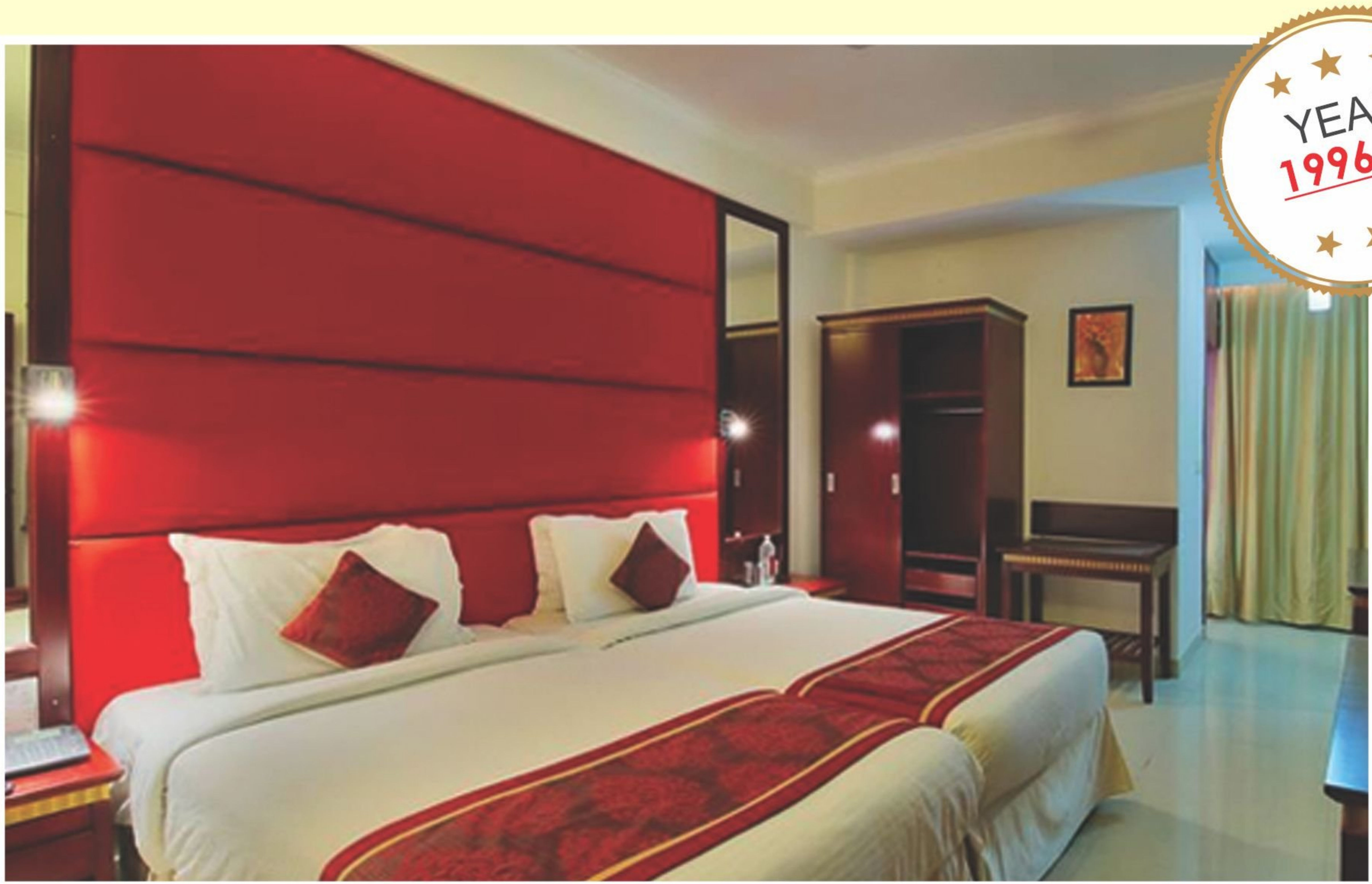
Hospitality Project



Hotel Residency Palace Jodhpur

4 Star Comforts Hotel, Subhash Nagar, Jaipur

This 4 star hotel located at Shastri Nagar, Jaipur has 40 well appointed rooms & a classic spacious restaurant. Professionally managed it offers & maintains best warm hospitality. It can be approached from railway station and Sindhi Camp central bus stand also.



- Project Status : 40 Premium Rooms with 4 Star Comfort
- Project Area : 0.4 Acres No. of Units : 45000 Sq. Ft. Builtup Area
- Amenities : Best-in-class in Jaipur with Restaurant, Gym,

Hospitality Project



ASHAPURNA
Palace &
Resorts

5 Star Hotel, Uchiyarda, Jodhpur

Ashapura Palace & Resort invites you to its world of luxury, traditional hospitality and personalized service with its tastefully designed rooms with modern amenities. Our hotel promises tourist & business traveler a highly satisfying, enjoyable and memorable stay. It's a budget hotel for budget travelers and corporate travelers. It's more suitable as a family hotel or homestay with prime location with an extra mark in the Blue City, Jodhpur. A distinctive feature of the hotel is the highly motivated and well-trained staff that provides the attentive and sensitive service. It will also offer the range of amenities like banquet hall,spa, swimming pool, gardens & beautiful landscapes.



- Project Status : Upcoming 5 Star Category Hotel and Resorts • Project Area : 0.4 Acres No. of Units : 45000 Sq. Ft. Builtup Area
- Amenities : New Address of Luxury and Comforts with Elegant Ambiance of Heritage

Education



imparting wisdom milestones

education



Education Project



Ashapurna Buddha Group of Institutions Udaipur

Near Indo American School, NH-8, Udaipur
Ashapurna solemnly prophecies education as a priority and teaching architectural course at Buddha Group of Institutions and providing quality education with good team of lecturers and managing staff and it is our pleasure to announce that many alumni of our college are working with many large organizations across India and are into architecture business.



- Project Status : Upcoming 5 Star Category Hotel and Resorts • Project Area : 1.5
- Acre Land Area No. of Units : 125000 Sq. Ft. Constructed Area

Windmills



lighting milestones

windmills



Windmill Project



Ashapurna WINDMILLS Village Kahla, Jaisalmer

Ashapurna Buildcon Limited is advancing for windmill projects. It is our ultimate conviction that 'Solar Energy' is the best form of Clean Energy which works well to efficiently manage the ergonomics of the present time. With the able support of the generic influence of highly placed Gen-Next business pulse. We create & infuse positive energy in harmony and rhythm to match the time of the present modern day influence. More over, it is important to note that the geographical location & situation (wind-power) is more conducive to operate & generate the wind-mills to produce the necessary valuable electricity.



Solar Power Project



Phalodi Tehsil, Jodhpur

Ashapurna is a progressive group with sensibilities for environment protection thus proactively adopts best practices in sustainable power generation and usage. Solar power generation is group's one of the most ambitious and happening business verticals. Group's corporate office, Ashapurna Mall and White House project are living examples of solar energy powered buildings. The group is also coming up with a major solar hub in Phalodi Tehsil of Jodhpur which is in the approval stage and will soon take the shape of a living reality.



Upcoming Project



Ashapurna Buildcon Limited is now coming with new projects in Mumbai and Bengaluru and extending its services across India.

Ashapurna Residential Apartments	Bengaluru
Ashapurna Township Mahapura	Jaipur
Ashapurna Township	Ajmer Road
Ashapurna Palace & Resort	Uchiyarda
Ashapurna Palace	Jodhpur
Ashapurna Heritage	Jodhpur Phase III & IV
Ashapurna’s Resort	Pushkar
Ashapurna Hotel	Ajit Bhawan
Ashapurna Mall & Multiplex	Mansarovar

Ashapurna in the Media



आशापूर्णा मोहनबाग का किया भूमि पूजन



बिल्डकोंन लाए है आपके लिए एक बहुत ही सुनहरा अवसर एक अल्ट्रा लक्सुरियस प्रोजेक्ट आशापूर्णा मोहनबाग जो की स्पेन के आर्किटेक्चर पर आधारित है। इस प्रोजेक्ट में आपको विलाज और कई उच्च स्तरीय सुविधाएं मिलेंगी जैसे स्पेन जैसी स्ट्रीट, हरे भरे वातावरण और शांतिमय बैठने के स्थान।

आशापूर्णा मोहनबाग में आपकी फैमिली के लिए सभी सुविधाएं उपलब्ध होंगी। जैसे की बड़ा प्ले ग्राउंड, वुडों के लिए सीनियर सिटीजन गार्डन, साइकिलिंग ट्रैक और जॉगिंग ट्रैक भी उपलब्ध होंगे। यह मल्टीनेशनल आवासीय प्रोजेक्ट लगभग 120 बीघा से भी ज्यादा में फैला हुआ बेहतरीन प्रोजेक्ट है। प्राइम लोकेशन होने के कारण यहां से एयरपोर्ट, राइकाबाग रेलवे स्टेशन, बोधि इंटरनेशनल स्कूल और उच्च न्यायालय महज कुछ मिनटों की दूरी पर स्थित हैं।

भूमि पूजन के साथ ही आशापूर्णा मोहनबाग में निर्माण के कार्य में और भी तेजी आएगी। कंपनी का लक्ष्य है कि विलाज का निर्माण समय पर पूरा किया जाए और ग्राहकों को जल्द से जल्द उनके घर सौंप दिए जाएं। यह प्रोजेक्ट जोधपुर के लिए एक बड़ी उपलब्धि है और यह शहर के विकास में महत्वपूर्ण योगदान होगा।

आप जोधपुर की बेहतरीन प्राइम लोकेशन पर अपना आशियाना खरीदने की सोच रहे हैं तो ढेर किस बात की आशापूर्णा

Ashapurna Group gets decent coverage in media for its versatile approach to both business and humanity. Be it corporate social responsibility, customer awareness drive, events of national interest or news related to the group's projects, Ashapurna can be seen on various platforms for all the good reasons.



We will add wings to **your dreams!**





Corporate Office :

Ashapurna Buildcon Limited

Opp. LIC Office, Circuit House Road,
Ratanada, Jodhpur - 342 001

Phone : 0291-2513747, 2514747

Mobile : +91 93140 41747

Email : info@ashapurna.com

marketing@ashapurna.com

Website : www.ashapurna.com



We are available with regular updates on:

